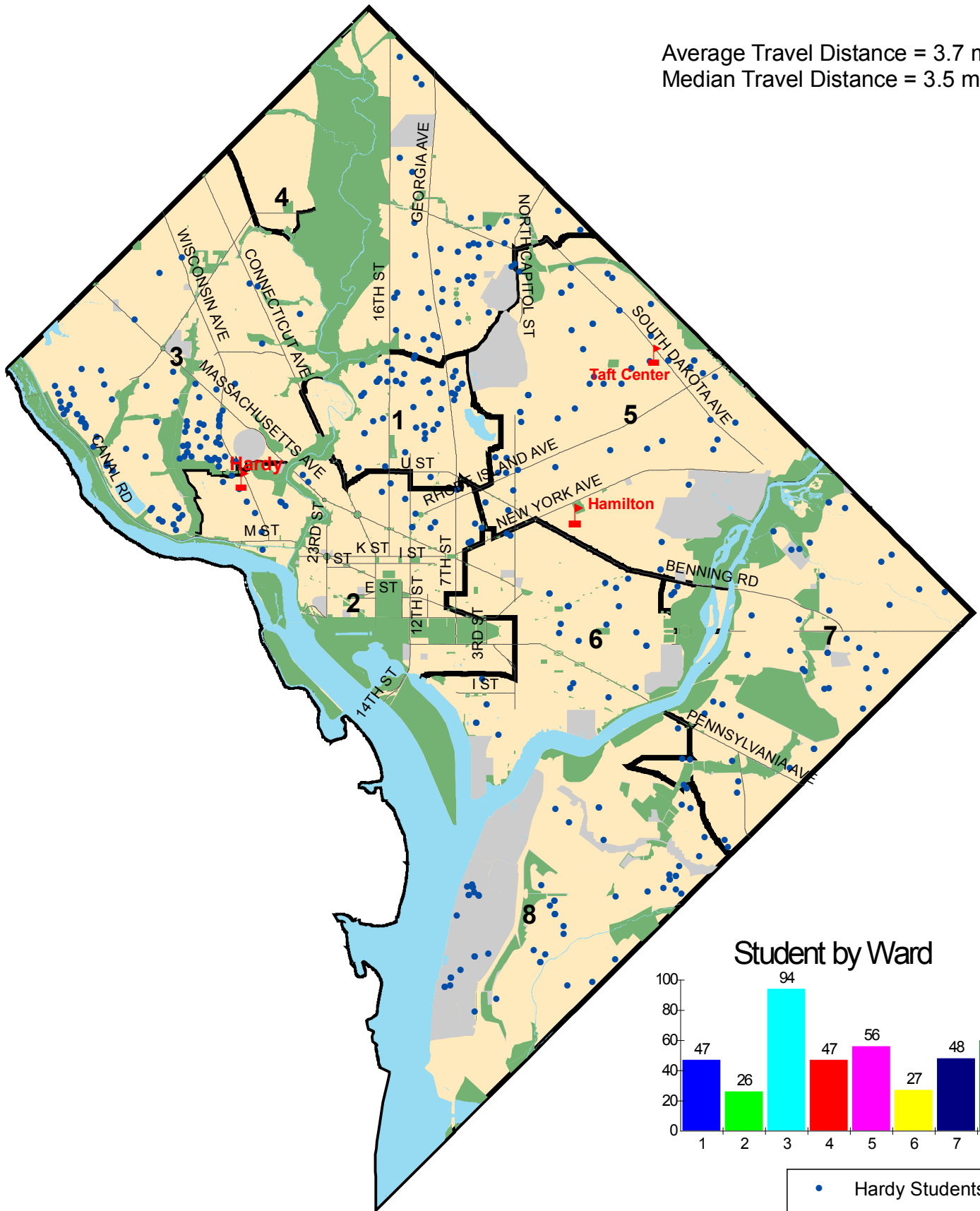


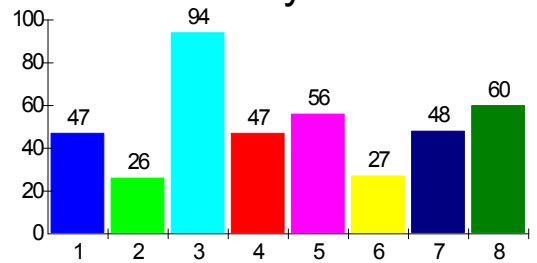
Distribution of Hardy MS Students in SY2005-06

Total Enrollment = 405

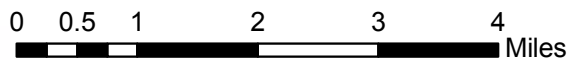
Average Travel Distance = 3.7 mile
Median Travel Distance = 3.5 mile



Student by Ward



- Hardy Students
- ▴ Hardy MS
- ▴ Taft Center
- ▴ Hamilton Sp Ed



Source: District of Columbia Public Schools