

# HARDY MIDDLE SCHOOL

1819 35<sup>th</sup> Street, N.W., Washington, DC



<b>INITIAL YEAR BUILT</b>	1933
<b>BUILDING AREA</b>	91,100 SF
<b>CURRENT PROGRAM CAPACITY</b>	485
<b>ENROLLMENT 2008</b>	316
<b>WARD</b>	2
<b>PROPOSED PROGRAM CAPACITY</b>	550



Site Plan

# HARDY MIDDLE SCHOOL

1819 35<sup>th</sup> Street, N.W., Washington, DC

## PROPOSED PROGRAM PROFILE

<b>GRADE CONFIGURATION</b>	6-8
<b>Fillmore Arts Center</b>	
<b>SQ. FT. (EXISTING)</b>	101,750
<b>SQ. FT. (ADDITION)</b>	

TYPE	PROPOSED
6	7
7	7
8	7
Gym	1
Bleachers	
Locker Rooms	2
Gym-Cafeteria	
Cafetorium	
Gym-Cafetorium	
Gym-Auditorium	
Auditorium	1
Multi-Purpose	

TYPE	PROPOSED
Cafeteria	1
Kitchen Services	1
Special Education	6
Media Center	1
Administrative/Health	1
Computer Lab	1
OT/PT	1
Science Lab	3
Art	2
Music	2
Teacher Workroom	2
Parent Resource	1

### Proposed Planning Profiles

The inventory of spaces listed here is intended to outline the program of educational and support spaces necessary to support the proposed program capacity. Individual educational specifications and facility programs will be developed with the School Improvement and School Planning / Design teams at the time of project initiation.

# HARDY MIDDLE SCHOOL

1819 35<sup>th</sup> Street, N.W., Washington, DC

## CONDITION ASSESSMENT



<i>Building System</i>	<i>2008 Rating</i>
ADA Compliance	Good
Conveying Systems	Good
Electrical	Good
Exterior Finish	Good
HVAC	Good
Interior Finish	Good
Plumbing	Good
Roof	Good
Structure	Good
Technology	Good

**Condition Assessment**

The body of information summarized below is based on a detailed facility condition assessment completed in 2006 and updated by visual observations conducted in 2007. Improvement initiatives completed by OPEFM in 2007 and 2008 are noted in red text in each section. An overall summary of work completed under various OPEFM programs is provided at the end of the condition assessment.

**Condition Scorecard**

These ratings reflect the overall condition and level of replacement need for an entire system, in adherence with the **Facility Condition Index (FCI) System**, categorizing systems as **"Good"** (FCI < .25), **"Fair"** (FCI 0.25 – 0.50), **"Poor"** (FCI 0.51 – 0.85), or **"Unsatisfactory"** (FCI > .86).

**Comments: No condition assessment is provided for new or recently modernized school facilities.**

# HARDY MIDDLE SCHOOL

1819 35<sup>th</sup> Street, N.W., Washington, DC

## RECENT HISTORY OF MODERNIZATION

### LEGACY PROJECTS-OTHER STABILIZATIONS

✓ Modernization Projects

◆ Planning

▼ Design

◆ Pre-Construction

□ In Progress

✓ Completed

# HARDY MIDDLE SCHOOL

1819 35<sup>th</sup> Street, N.W., Washington, DC



First Floor

<span style="display: inline-block; width: 15px; height: 15px; background-color: #808080; border: 1px solid black;"></span> Administration/Health	<span style="display: inline-block; width: 15px; height: 15px; background-color: #D2691E; border: 1px solid black;"></span> Auditorium
<span style="display: inline-block; width: 15px; height: 15px; background-color: #9ACD32; border: 1px solid black;"></span> Gymnasium/Cafeteria	<span style="display: inline-block; width: 15px; height: 15px; background-color: #ADD8E6; border: 1px solid black;"></span> Other
<span style="display: inline-block; width: 15px; height: 15px; background-color: #6A5ACD; border: 1px solid black;"></span> Classrooms	<span style="display: inline-block; width: 15px; height: 15px; background-color: #FF4500; border: 1px solid black;"></span> Media Center
<span style="display: inline-block; width: 15px; height: 15px; background-color: #ADD8E6; border: 1px solid black;"></span> Kindergarten	<span style="display: inline-block; width: 15px; height: 15px; background-color: #8B4513; border: 1px solid black;"></span> Computer Lab
<span style="display: inline-block; width: 15px; height: 15px; background-color: #4169E1; border: 1px solid black;"></span> Pre-K/Pre-School	<span style="display: inline-block; width: 15px; height: 15px; background-color: #3CB371; border: 1px solid black;"></span> OT/PT
<span style="display: inline-block; width: 15px; height: 15px; background-color: #A52A2A; border: 1px solid black;"></span> Music/Art	<span style="display: inline-block; width: 15px; height: 15px; background-color: #4169E1; border: 1px solid black;"></span> Special Education
<span style="display: inline-block; width: 15px; height: 15px; background-color: #2E8B57; border: 1px solid black;"></span> Science Lab	<span style="display: inline-block; width: 15px; height: 15px; background-color: #9370DB; border: 1px solid black;"></span> Unassigned
<span style="display: inline-block; width: 15px; height: 15px; background-color: #D2B48C; border: 1px solid black;"></span> Lobby	<span style="display: inline-block; width: 15px; height: 15px; background-color: #DDA0DD; border: 1px solid black;"></span> Elevator Addition

### Concept Plans

These floor plans represent planning concepts for proposed facility use, aligning the proposed program capacity, the proposed planning profiles, and the conceptual reconfiguration of the building. Each project is subject to a formal design process, incorporating input from the School Improvement team at the time of project initiation.

# HARDY MIDDLE SCHOOL

1819 35<sup>th</sup> Street, N.W., Washington, DC



Second Floor

<span style="display: inline-block; width: 15px; height: 15px; background-color: #808080; border: 1px solid black;"></span> Administration/Health	<span style="display: inline-block; width: 15px; height: 15px; background-color: #C08040; border: 1px solid black;"></span> Auditorium
<span style="display: inline-block; width: 15px; height: 15px; background-color: #A0C080; border: 1px solid black;"></span> Gymnasium/Cafeteria	<span style="display: inline-block; width: 15px; height: 15px; background-color: #80C0C0; border: 1px solid black;"></span> Other
<span style="display: inline-block; width: 15px; height: 15px; background-color: #8080C0; border: 1px solid black;"></span> Classrooms	<span style="display: inline-block; width: 15px; height: 15px; background-color: #C04040; border: 1px solid black;"></span> Media Center
<span style="display: inline-block; width: 15px; height: 15px; background-color: #A0A0C0; border: 1px solid black;"></span> Kindergarten	<span style="display: inline-block; width: 15px; height: 15px; background-color: #C04040; border: 1px solid black;"></span> Computer Lab
<span style="display: inline-block; width: 15px; height: 15px; background-color: #4080C0; border: 1px solid black;"></span> Pre-K/Pre-School	<span style="display: inline-block; width: 15px; height: 15px; background-color: #40C080; border: 1px solid black;"></span> OT/PT
<span style="display: inline-block; width: 15px; height: 15px; background-color: #C04040; border: 1px solid black;"></span> Music/Art	<span style="display: inline-block; width: 15px; height: 15px; background-color: #4080C0; border: 1px solid black;"></span> Special Education
<span style="display: inline-block; width: 15px; height: 15px; background-color: #40C080; border: 1px solid black;"></span> Science Lab	<span style="display: inline-block; width: 15px; height: 15px; background-color: #8080C0; border: 1px solid black;"></span> Unassigned
<span style="display: inline-block; width: 15px; height: 15px; background-color: #C0C080; border: 1px solid black;"></span> Lobby	<span style="display: inline-block; width: 15px; height: 15px; background-color: #C080C0; border: 1px solid black;"></span> Elevator Addition

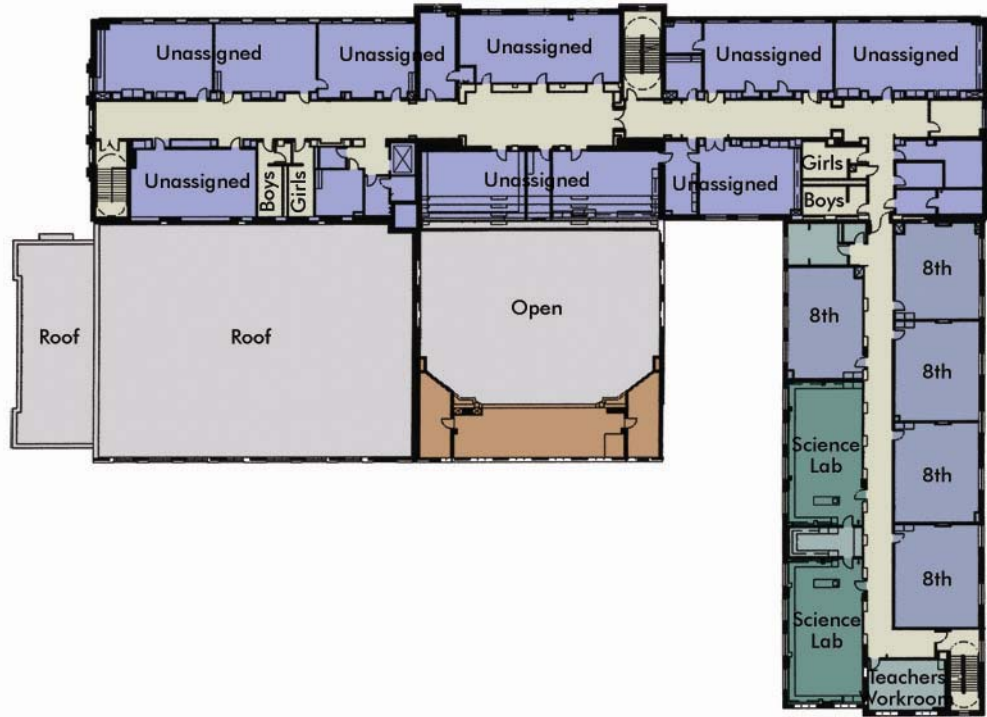
**Concept Plans**

These floor plans represent planning concepts for proposed facility use, aligning the proposed program capacity, the proposed planning profiles, and the conceptual reconfiguration of the building. Each project is subject to a formal design process, incorporating input from the School Improvement team at the time of project initiation.



# HARDY MIDDLE SCHOOL

1819 35<sup>th</sup> Street, N.W., Washington, DC



Third Floor

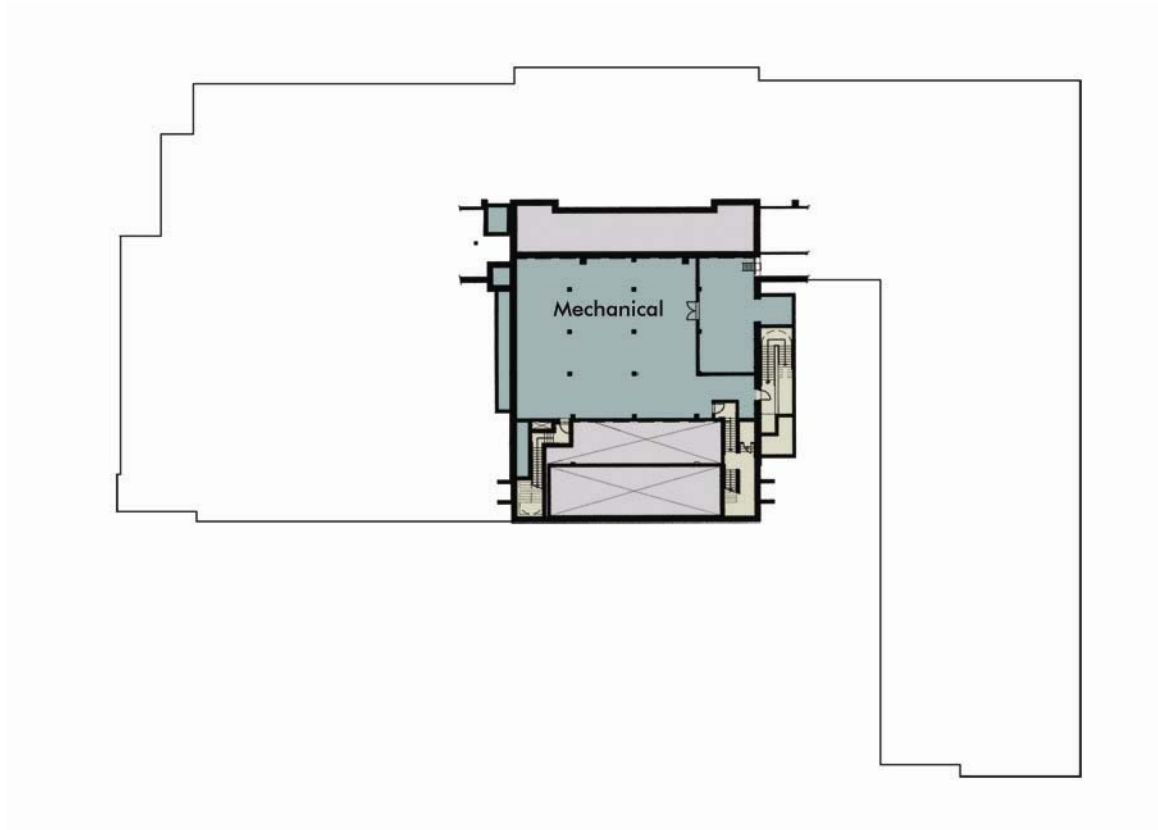
- |                                                                                                                                                   |                                                                                                                                               |
|---------------------------------------------------------------------------------------------------------------------------------------------------|-----------------------------------------------------------------------------------------------------------------------------------------------|
| <span style="display: inline-block; width: 15px; height: 15px; background-color: #808080; border: 1px solid black;"></span> Administration/Health | <span style="display: inline-block; width: 15px; height: 15px; background-color: #C08040; border: 1px solid black;"></span> Auditorium        |
| <span style="display: inline-block; width: 15px; height: 15px; background-color: #A0A040; border: 1px solid black;"></span> Gymnasium/Cafeteria   | <span style="display: inline-block; width: 15px; height: 15px; background-color: #80A0A0; border: 1px solid black;"></span> Other             |
| <span style="display: inline-block; width: 15px; height: 15px; background-color: #606080; border: 1px solid black;"></span> Classrooms            | <span style="display: inline-block; width: 15px; height: 15px; background-color: #C04040; border: 1px solid black;"></span> Media Center      |
| <span style="display: inline-block; width: 15px; height: 15px; background-color: #A0A0C0; border: 1px solid black;"></span> Kindergarten          | <span style="display: inline-block; width: 15px; height: 15px; background-color: #804040; border: 1px solid black;"></span> Computer Lab      |
| <span style="display: inline-block; width: 15px; height: 15px; background-color: #404080; border: 1px solid black;"></span> Pre-K/Pre-School      | <span style="display: inline-block; width: 15px; height: 15px; background-color: #408040; border: 1px solid black;"></span> OT/PT             |
| <span style="display: inline-block; width: 15px; height: 15px; background-color: #804040; border: 1px solid black;"></span> Music/Art             | <span style="display: inline-block; width: 15px; height: 15px; background-color: #404080; border: 1px solid black;"></span> Special Education |
| <span style="display: inline-block; width: 15px; height: 15px; background-color: #408040; border: 1px solid black;"></span> Science Lab           | <span style="display: inline-block; width: 15px; height: 15px; background-color: #6060C0; border: 1px solid black;"></span> Unassigned        |
| <span style="display: inline-block; width: 15px; height: 15px; background-color: #A0A040; border: 1px solid black;"></span> Lobby                 | <span style="display: inline-block; width: 15px; height: 15px; background-color: #8060C0; border: 1px solid black;"></span> Elevator Addition |

### Concept Plans

















These floor plans represent planning concepts for proposed facility use, aligning the proposed program capacity, the proposed planning profiles, and the conceptual reconfiguration of the building. Each project is subject to a formal design process, incorporating input from the School Improvement team at the time of project initiation.

# HARDY MIDDLE SCHOOL

1819 35<sup>th</sup> Street, N.W., Washington, DC



Basement

- |                                                                                                          |                                                                                                       |
|----------------------------------------------------------------------------------------------------------|-------------------------------------------------------------------------------------------------------|
|  Administration/Health |  Auditorium        |
|  Gymnasium/Cafeteria   |  Other             |
|  Classrooms            |  Media Center      |
|  Kindergarten          |  Computer Lab      |
|  Pre-K/Pre-School      |  OT/PT             |
|  Music/Art             |  Special Education |
|  Science Lab           |  Unassigned        |
|  Lobby                 |  Elevator Addition |

### Concept Plans

These floor plans represent planning concepts for proposed facility use, aligning the proposed program capacity, the proposed planning profiles, and the conceptual reconfiguration of the building. Each project is subject to a formal design process, incorporating input from the School Improvement team at the time of project initiation.