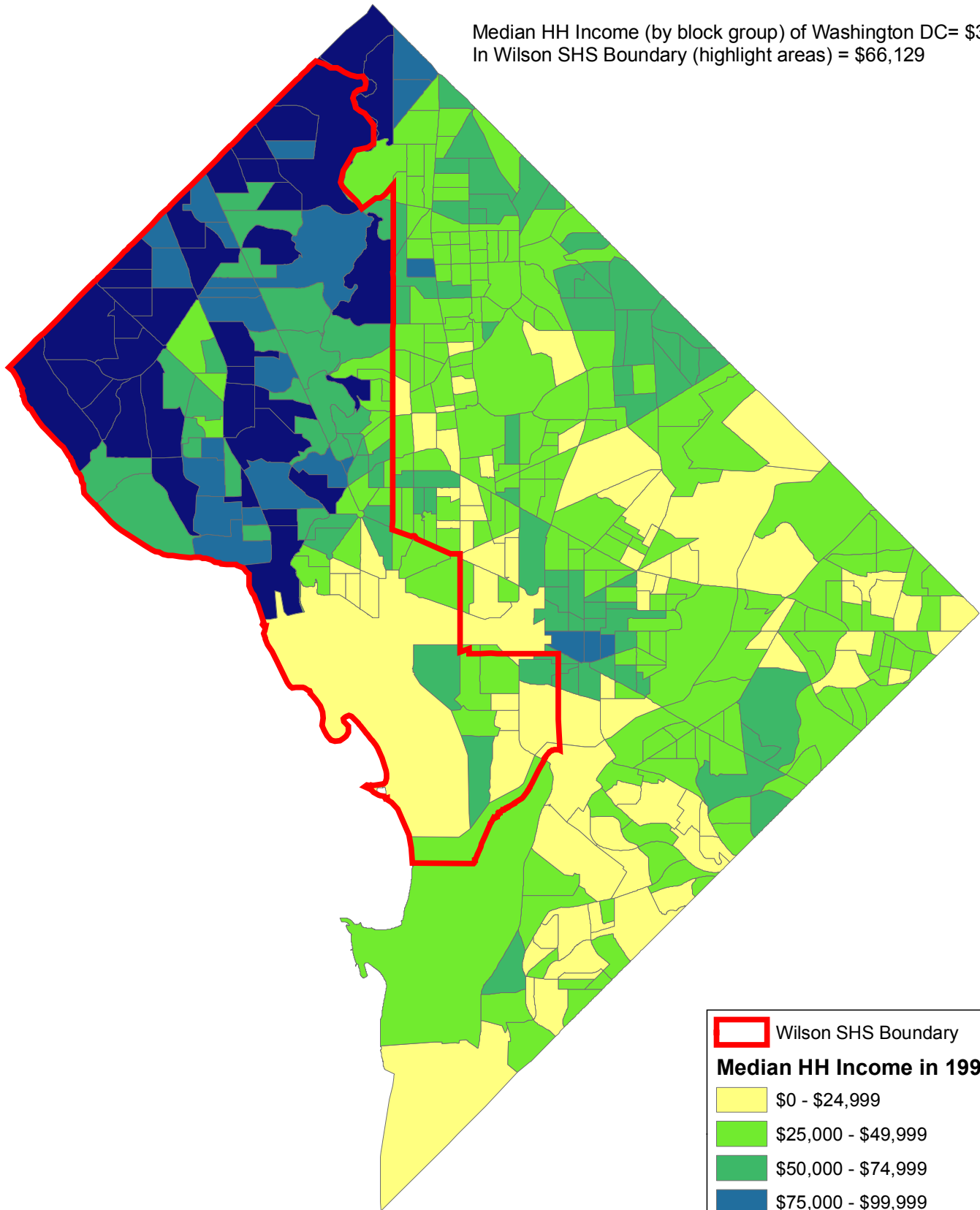



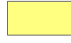




# Median Household Income in Washington DC by Census Block Group in 2000

Median HH Income (by block group) of Washington DC= \$38,942  
In Wilson SHS Boundary (highlight areas) = \$66,129



 Wilson SHS Boundary

**Median HH Income in 1999**

-  \$0 - \$24,999
-  \$25,000 - \$49,999
-  \$50,000 - \$74,999
-  \$75,000 - \$99,999
-  \$100,000 - \$200,001

