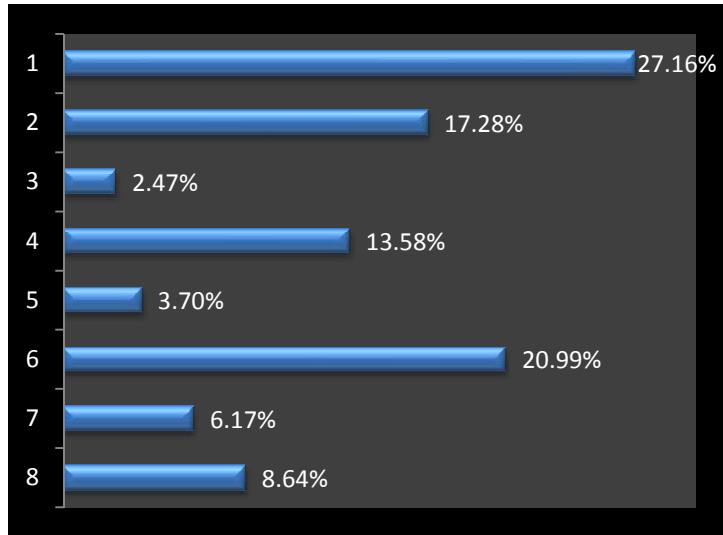


Community Discussion on the Future of Public Education In DC: At a Fork in the Road; March 29, 2012  
Polling Results

**Question ( ■ Correct )**                      **Responses**

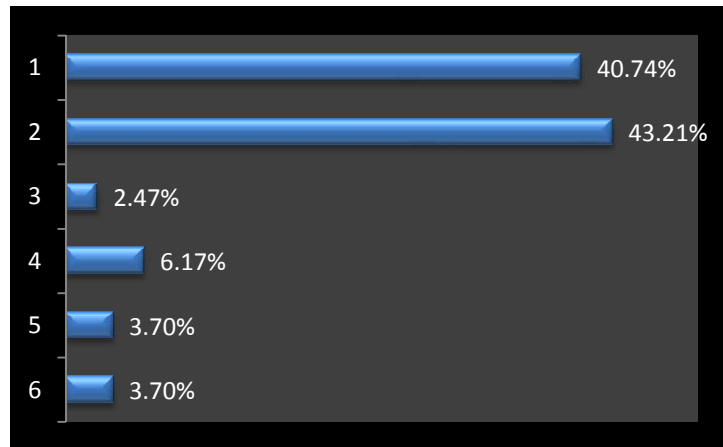
**What category of stakeholder describes you?**

	Count	%
1. Educator	22	27.16%
2. Community Based Organization	14	17.28%
3. Member of Faith Community	2	2.47%
4. Parent of School Age children	11	13.58%
5. Business Leader	3	3.70%
6. General Public	17	20.99%
7. Government Official	5	6.17%
8. Student	7	8.64%
	<b>81</b>	<b>100.00%</b>



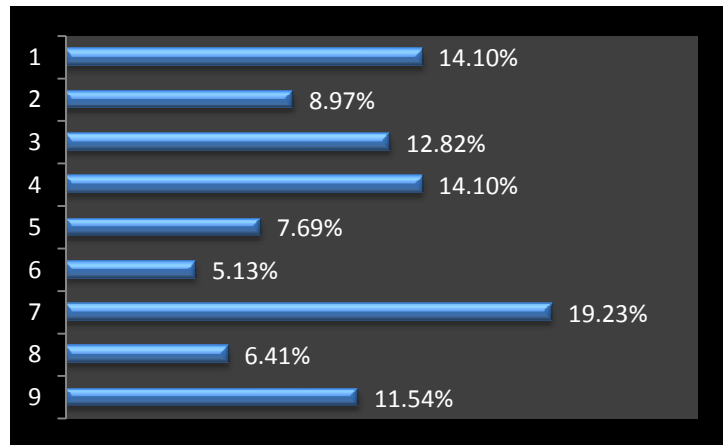
**Which category best describes your ethnicity?**

	Count	%
1. Black/ African American	33	40.74%
2. White/ Caucasian	35	43.21%
3. Hispanic	2	2.47%
4. Asian	5	6.17%
5. Multi-racial	3	3.70%
6. Other	3	3.70%
	<b>81</b>	<b>100.00%</b>



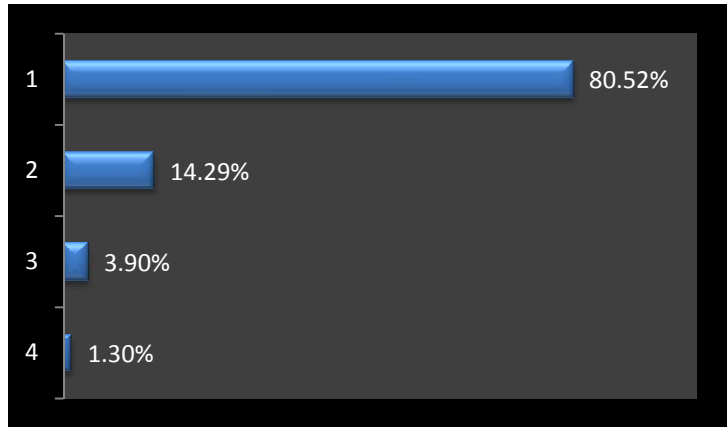
**What Ward do you live in?**

	Count	%
1. 1	11	14.10%
2. 2	7	8.97%
3. 3	10	12.82%
4. 4	11	14.10%
5. 5	6	7.69%
6. 6	4	5.13%
7. 7	15	19.23%
8. 8	5	6.41%
9. 9 – I don't live in Washington, D.C.	9	11.54%
	<b>78</b>	<b>100.00%</b>



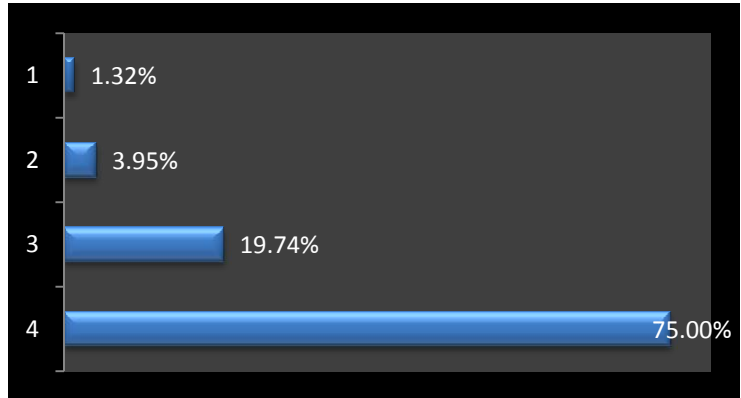
**How important is it to fight for a system of neighborhood schools?**

	Count	%
1. Very important	62	80.52%
2. Important	11	14.29%
3. Not important	3	3.90%
4. Not important at all	1	1.30%
	<b>77</b>	<b>100.00%</b>



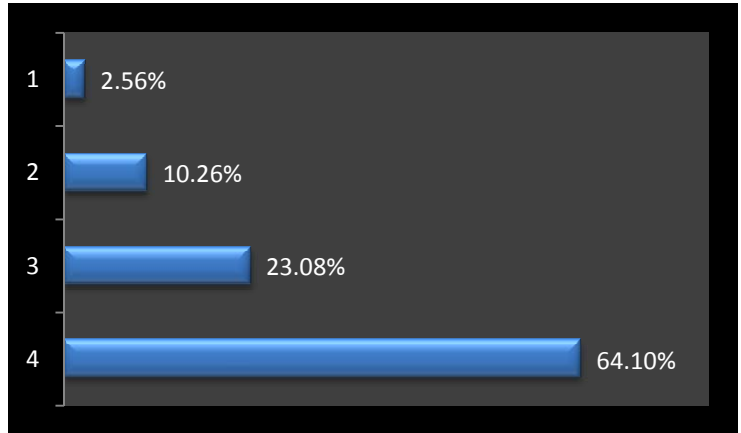
**The labeling of schools as failures based on their standardized test scores has helped improve schools in Washington D.C.**

	Count	%
1. Strongly Agree	1	1.32%
2. Agree	3	3.95%
3. Disagree	15	19.74%
4. Strongly Disagree	57	75.00%
	<b>76</b>	<b>100.00%</b>



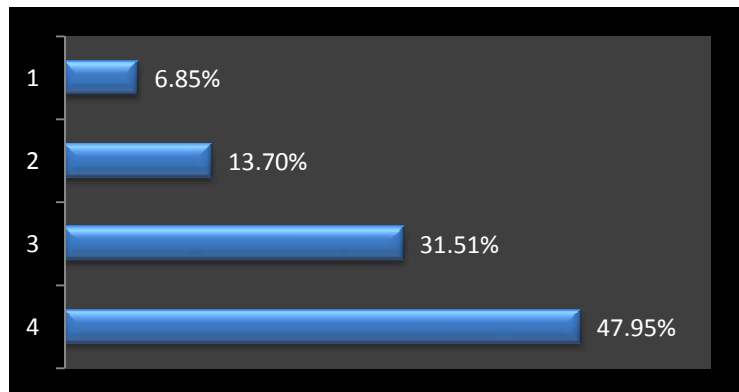
**Low student performance on standardized tests is a valid reasons to close a school.**

	Count	%
1. Strongly Agree	2	2.56%
2. Agree	8	10.26%
3. Disagree	18	23.08%
4. Strongly Disagree	50	64.10%
	<b>78</b>	<b>100.00%</b>



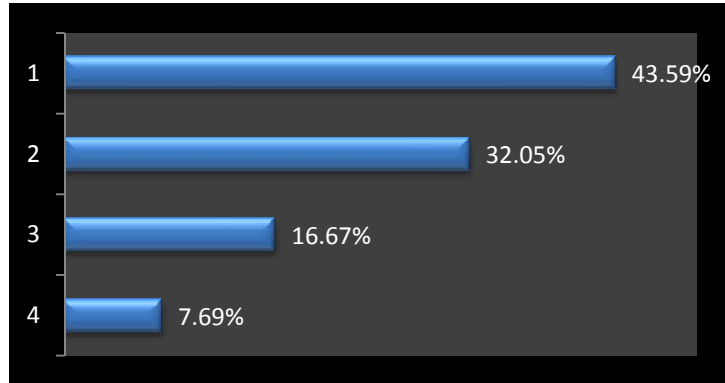
**Continuing the expansion of charter schools is good for public education in the District of Columbia.**

	Count	%
1. Strongly Agree	5	6.85%
2. Agree	10	13.70%
3. Disagree	23	31.51%
4. Strongly Disagree	35	47.95%
	<b>73</b>	<b>100.00%</b>



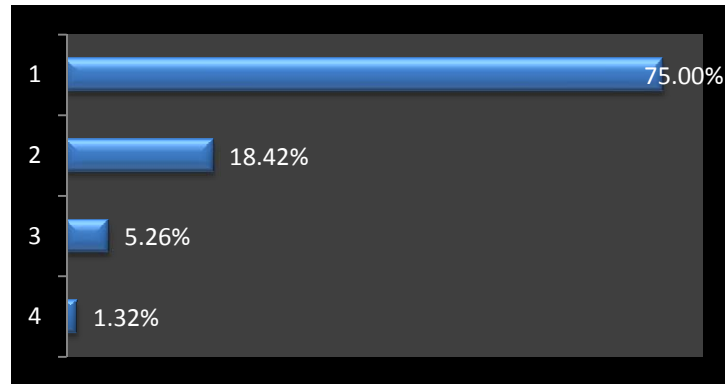
**Reestablish an elected school board to oversee local school policy and budget oversight.**

	Count	%
1. High priority	34	43.59%
2. Priority	25	32.05%
3. Low priority	13	16.67%
4. Not a priority at all	6	7.69%
	<b>78</b>	<b>100.00%</b>



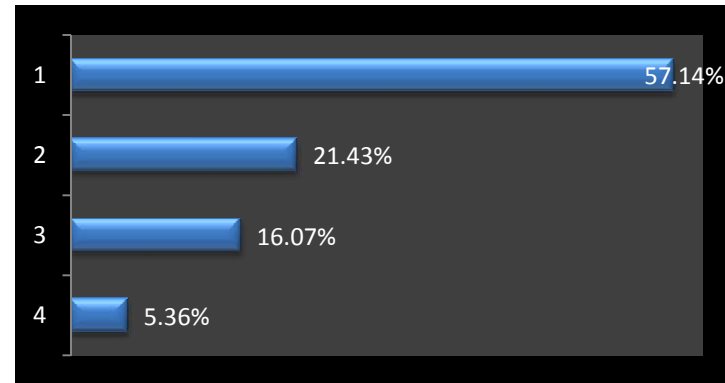
**Establish a bar against (moratorium) school closings until a comprehensive community-based plan that addresses boundaries, feeder patterns, and modernization of all Charter and DCPS schools is in place.**

	Count	%
1. High priority	57	75.00%
2. Priority	14	18.42%
3. Low priority	4	5.26%
4. Not a priority at all	1	1.32%
	<b>76</b>	<b>100.00%</b>



**Require local school approval before turning any existing DCPS schools over to charter or outside management companies.**

	Count	%
1. High priority	32	57.14%
2. Priority	12	21.43%
3. Low priority	9	16.07%
4. Not a priority at all	3	5.36%
	<b>56</b>	<b>100.00%</b>



**Demand that city council establish a committee on public education.**

	Count	%
1. High priority	45	56.96%
2. Priority	20	25.32%
3. Low priority	11	13.92%
4. Not a priority at all	3	3.80%
	<b>79</b>	<b>100.00%</b>

