

# **Myth and Reality:**

A Study of Excess Space in the District  
of Columbia Public High Schools

A Case Study of Cardozo and McKinley  
Technology Senior High Schools

May 1, 2002

Prepared by **21<sup>st</sup> Century School Fund** and **SHAPPE** (Senior High  
Alliance of Parents, Principals, & Educators)

The **21<sup>st</sup> Century School Fund** is a non-profit organization dedicated to building the public will and capacity to modernize public school facilities so they support quality education and community revitalization.

The **Senior High Alliance of Parents, Principals & Educators (SHAPPE)** is a coalition of parent leaders, principals and educators who are dedicated to continuous improvement of the District's public high schools. They are also committed to ensuring that those actually in the high schools are a part of the decision making to bring about this improvement.

This report was made possible by funding from the Eugene and Agnes E. Meyer Foundation and the Morris and Gwendolyn Cafritz Foundation.

## TABLE of CONTENTS

Introduction.....	1
Public Education Facilities Planning .....	1
Need for Better Understanding of High School Buildings .....	2
Background.....	3
High School Inventory .....	3
High School Space Requirements.....	4
Scope and Findings.....	5
Details of Study at Cardozo and McKinley .....	5
Findings for Cardozo and McKinley .....	6
Methodology.....	9
Determination of <i>Gross</i> Floor Spaces.....	9
Determination of <i>Net</i> Floor Spaces.....	9
Conclusions.....	12
Recommendations.....	13
Tables	
Table I: Year Built, Age and Proposed Action for District High Schools	
Table II: Comparison between Standard Ed Specs, Site Specific Ed Specs, and the Architectural Design of <i>Net</i> Floor Spaces at a Modernized McKinley	
Table III: Comparison of Actual and Standards for <i>Net</i> Floor Space and Student Capacity at Cardozo	
Table IV: Comparison between Actual and Standards of Site Facilities at Cardozo	
Appendices	
Appendix A: Simple Floor Diagrams of Cardozo SHS and McKinley Tech SHS	
Appendix B: List of Rooms Measured at Cardozo SHS	
Appendix C: Comparison between Cardozo and Standard Ed Specs of <i>Net</i> Floor Spaces and Student Capacities	



# **Introduction**

## ***Public Education Facilities Planning***

The District of Columbia is in the early years of a ten to fifteen year initiative to either modernize or replace nearly all of its public school buildings. The District of Columbia Public Schools (DCPS) developed a Facility Master Plan, adopted by the District Board of Education on March 7, 2001, that outlines a process for this initiative. Annually, the DCPS prepares a six year capital improvements program that describes the spending plan and priorities of the school district's master plan on a project specific basis. This budget is set by the mayor based on the school systems request, and approved or authorized by the Council and Congress. Once the capital budget is authorized, the District government borrows the funds necessary to carry out the capital improvements program and to meet the spending requirements of the approved capital projects.

The development of the Facility Master Plan was a tremendous step forward for the District. However, an additional planning effort is needed for the high schools. One reason is that the high schools were unevenly spread among the eight regional planning areas utilized in the overall planning process (i.e., some planning areas had one high school, while other areas had multiple high schools). Another reason is that the affect of modernizing, expanding or decreasing enrollment in one high school has a considerable effect on the other high schools. This is made more pronounced since high school students are able to travel to attend a wide selection of high schools. A third reason is that career technical education, special education, athletics and specialty magnet programs need to be coordinated and planned so there is an equitable and efficient distribution of these opportunities.

## ***Need for Better Understanding of High School Buildings***

In support of the high school planning process, the 21<sup>st</sup> Century School Fund (21CSF) and the Senior High Alliance of Parents, Principals, and Educators (SHAPPE) jointly undertook: (1) an in-depth floor space analysis of Cardozo Senior High School, the first on the list of thirteen District high schools that have yet to begin renovation; and (2) a review of design plans for a modernized McKinley Tech High School, the first high school for which renovation work has begun. Cardozo is located at 1300 Clifton St., NW, and in 2001-2002 it has an enrollment of 780 students. McKinley is located at 2<sup>nd</sup> and T Streets, NE, and was closed in 1997. Before closing, it had an enrollment of 859 students.

There are four compelling reasons 21CSF and SHAPPE undertook this study.

A belief that a DCPS estimate of the quantity of excess floor space in the high schools may be incorrect.

An immediate need to accurately assess the quantity of excess floor space that is available for swing space, special education programs, charter schools, and community use.

A belief that the DCPS enrollment capacity assignments, and estimates of capacity utilization, for the high schools may be incorrect.

A concern that strict adherence to a DCPS floor space standard and guidelines will make the cost of modernization beyond the reach of the District, and result in major interior demolition at an extremely high cost.

With this study, 21CSF and SHAPPE hope to prompt DCPS to: (1) develop accurate measurements of useable (a.k.a. *net*) floor space (which includes classrooms, offices, storage, instructional support and physical education, assembly and cafeteria areas) for all schools, beginning with the high schools; (2) do a quality check on the quantity of total *gross*<sup>1</sup> floor space

---

<sup>1</sup> *Gross* floor space encompasses all of the roofed interior spaces within a school building, and is measured from the exterior face of outer walls. It is the *net* floor space plus the floor space for mechanical and electrical rooms, maintenance rooms, pipe tunnels, hallways, passages, elevators, stairwells, and toilets.

of existing schools, beginning with the high schools; (3) revise existing Standard Education Specifications and a floor space design standard to be flexible enough to accommodate the modernization of the District’s old and historic schools, beginning with the high schools; and (4) develop a plan to assist the high schools use their space more efficiently.

## Background

### *High School Inventory*

There are 18 high schools within DCPS. These schools are listed in chronological order in Table I, along with the year they were built, their age, and whether they are to be modernized or replaced.

Table I: Year Built, Age, and Proposed Action for District High Schools

School	Year Built	Age	Proposed Action
School Without Walls	1882	120	Modernize
Luke Moore	1891	111	Modernize
Ellington	1898	104	Modernize
Bell	1910	92	Replace
MM Washington	1912	90	Modernize
Cardozo	1916	86	Modernize
Eastern	1923	79	Modernize
McKinley Tech	1928	74	Modernize
Roosevelt	1932	70	Modernize
Phelps	1934	68	Modernize
Anacostia	1935	67	Replace
Wilson	1935	67	Modernize
Banneker	1939	63	Modernize
Coolidge	1940	62	Modernize
Spingarn	1941	61	Modernize
Ballou	1960	42	Modernize
Woodson	1973	29	Replace
Dunbar	1977	24	Modernize
<b>Average Age</b>		<b>73</b>	

The average age of the 18 high schools is 73 years. According to The 21<sup>st</sup> Century School Fund's Format Pro<sup>2</sup> database, these high schools have the following building and enrollment statistics:

- there is 3,868,811 *gross* square feet (GSF) of floor space in all of the high schools combined
- the total enrollment capacity is 18,381 students
- the total enrollment in the 2000-2001 school year was 12,829 students, or 70% capacity utilization

### ***High School Space Requirements***

In December 1999, DCPS released Standard Education Specifications for the District's high schools. Education specifications (ed specs) are architectural guidelines for a school building, including floor space and student capacity requirements, which have been distilled from information about planned educational and operational activities of the school. Site-specific ed specs, based upon the standard ones, are developed for each school renovation.

As part of the Facility Master Plan, DCPS then set a *gross* floor space design standard for the high schools of 180 GSF per student (GSF/S). In the Capital Improvements Program of 2001, this value was changed to 192 GSF/S, due to significant challenges in trying to program existing high schools with large cafeterias, auditoriums, and other specialty spaces. The large size of these spaces has the effect of making the high schools appear oversized, on a GSF/S basis.

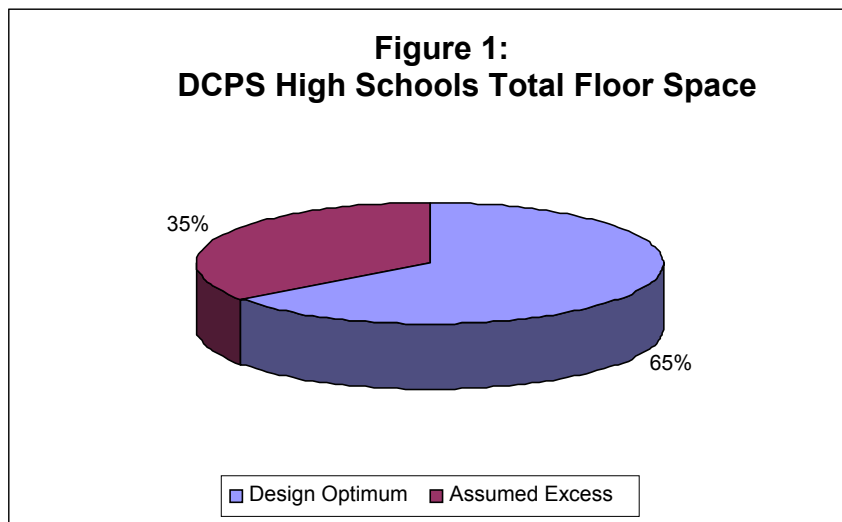
Using the revised floor space design standard, and multiplying it by the total high school enrollment of 12,842 students, results in an optimum *gross* floor space for all of the high schools combined of 2,465,664 GSF. A comparison of the optimum *gross* floor space of 2,465,664 GSF to the total existing *gross* floor space of 3,789,900 GSF in DCPS records leads to the estimate that has

---

<sup>2</sup> "Facilities, Operations Resource, Management Analysis, Tool (Format Pro)." A facilities database managed by The



been drawn by DCPS that there is 1,324,236 GSF of excess *gross* floor space in all of the high schools. In other words, DCPS estimates that the total *gross* floor space of the existing high schools is underutilized by 35%, as seen in Figure 1, even after increasing the floor space design standard.



## Scope and Findings

### ***Details of Study at Cardozo and McKinley***

This study examined the validity of the DCPS estimate that 35% of its total *gross* floor space is excess, and the suitability of the current floor space design standard, by comparing the *gross* floor spaces of both the existing Cardozo building and the old McKinley building to DCPS records. Cardozo has a recorded *gross* floor space of 355,400 GSF, and McKinley had a recorded *gross* floor space of 282,200 GSF prior to renovation. In the study, an alternative *gross* floor space value was calculated for Cardozo, while an alternative value for the old McKinley was obtained from a modernization design report. Comparison of these alternate values to the ones in DCPS

records provides an indication of the accuracy level of the DCPS value for total *gross* floor space in all of the high schools.

The study also examined the suitability of the DCPS ed specs for the modernization or replacement of the high schools, by determining the existing *net* floor space at Cardozo and comparing it to the proposed *net* floor space provided in the standard ed specs for an 800 Student Model school. A review of the modernization design work at McKinley provided a comparison between *net* floor space in the same standard ed specs, in site-specific ed specs developed for the modernization, and in the architectural design developed for the modernization.

The study also looked at the DCPS capacity number for Cardozo and compared it to the standard ed specs capacity assignments. Finally, a comparison was made between the existing site facilities at Cardozo and the site facilities provided for in the standard ed specs for an 800 Student Model school.

### ***Findings for Cardozo and McKinley***

The results from the in-depth study of Cardozo indicate:

- The calculated *gross* floor space is 290,672 GSF, which is 18% less than the value of 355,400 GSF recorded by DCPS. The DCPS value seems to include some floor space as *gross* that it shouldn't, including uncovered interior courtyards and nonexistent floor space in the upper levels of the auditorium and gymnasiums.
- The measured existing *net* floor space is 145,310 NSF, which is 50% more than the value of 96,590 NSF in the standard ed specs for an 800 Student Model school. Some of the existing spaces in Cardozo are either not included or undersized in the ed specs, including labs, shops, and the armory, rifle range, pool, auditorium, and cafeteria.
- Labs, shops, and the armory, rifle range, pool, auditorium, and cafeteria spaces account for 72% of the difference between the *net* floor space in Cardozo and in the standard ed specs.

### Cardozo Auditorium



- The sum of the floor spaces for maintenance rooms (custodial offices and closets), utility rooms (mechanical/electrical rooms, pipe tunnels, and toilets), and building support spaces (hallways, stairwells, passages, elevators, and walls) is 145,362 SF, which is 50% of the total *gross* floor space.

### Cardozo Hallway



- The student capacity of the existing building, using ed specs teaching stations, is 1,335, which is 15% less than 1,578 recorded by DCPS. Based on capacity, the standard ed specs provides for 118 NSF per student (96,590 NSF with 820 students), compared to 109 NSF per student (145,310 NSF with 1,335 students) in the existing building.
- The school does not have most of the site facilities that are provided for in the standard ed specs. The only standard ed specs facilities that the school does have are a multipurpose grassy play field, a track, bleacher seating, and tennis courts.

**Cars Parked at Cardozo**



The results from the review of the modernization work at McKinley indicate:

- The architects designing the modernized McKinley recorded the *gross* floor space of the old building as 300,000 GSF, which is 6% more than the value of 280,200 GSF recorded by DCPS.
- The total *net* floor space after modernization is designed to be 129,074 NSF, which is 18,879 NSF (or 17%) more than the value of 110,195 NSF in the site-specific ed specs, and 32,484 NSF (or 34%) more than the value of 96,590 NSF in the standard ed specs.
- The library, auditorium, gym, and cafeteria account for 95% of the difference in total modernized *net* floor space between the architectural design and the site-specific ed specs.

## **Methodology**

### ***Determination of Gross Floor Spaces***

The calculation of the existing gross floor space at Cardozo was performed using measurements from DCPS architectural drawings (i.e., floor plans) of the school. The drawings are scaled, with dimensions, and a basic ruler was used to measure floor lengths and widths in feet. Gross floor space was determined for each floor of the building (and then added together) by calculating the total area within the exterior walls of the building for that floor, and then subtracting the areas for which either no actual floor exists or there is no roof overhead. For example, determination of the gross floor space of the ground floor involved calculating the total area within the exterior walls, and then subtracting the areas of the two courtyards (for which there is no roof). Simple floor diagrams of the layouts at Cardozo and the old McKinley, accompanied by charts listing room usage, are included in Appendix A.

The determination of the gross floor space for the old McKinley design was achieved by obtaining data from a modernization design report prepared by the project architects.<sup>3</sup> No actual measurements were performed at McKinley in this study. The design report provides a value for the old gross floor space at McKinley prior to modernization.

### ***Determination of Net Floor Spaces***

The determination of the modernized *net* floor space at McKinley was also achieved by obtaining data from the modernization design report. The report provides modernized *net* floor spaces from site-specific ed specs developed for the modernization, and from the modernized design developed by the architects. A summary of these new *net* floor spaces, by functional room categories, is provided in Table II.

---

<sup>3</sup> “Design Analysis: The Technical High School at McKinley,” Volume 1, McKissack & McKissack, Jan. 21, 2002.

Table II: Comparison between Standard Ed Specs, Site-Specific Ed Specs, and the Architectural Design of *Net* Floor Spaces at a Modernized McKinley

Room Category	Modernized <i>Net</i> Floor Space (ft <sup>2</sup> )		
	Standard Ed Specs	Site-Specific Ed Specs	Architectural Design
Core Academic	42,700	50,000	51,533
Career Tech. & Educ.	4,375	0	0
Media Center/Library	4,350	4,350	6,186
Visual Arts	1,600	2,900	2,929
Performing Arts	5,625	16,425	27,884
JROTC	2,000	2,000	2,088
Physical Education	19,800	18,950	21,764
Family & Consumer Science	0	1,830	0
Administration	5,440	4,990	5,918
Guidance	1,550	1,550	1,785
Dining/Commons	9,150	7,200	8,987
<b>Total</b>	<b>96,590</b>	<b>110,195</b>	<b>129,074</b>

The measurement of existing net floor space at Cardozo entailed walkthroughs and physical measurements at the school (accompanied by either the principal or members of the custodial staff) on two occasions: January 28, 2002 and February 1, 2002. The physical measurements involved either directly or indirectly measuring the floor dimensions of the following room types: classrooms, labs, shops, media center/library, physical education, JROTC, guidance, health, administration, dining/commons, and storage. The shaded portions of the Appendix A diagrams of Cardozo indicate the rooms measured.

Direct measurements of the rooms at Cardozo were performed, where possible, with a standard hardware tape-measure or a hand-held sonic measuring device. Indirect measurements, in which dimensions were measured with the abovementioned drawings, were performed in rooms that were not easily-accessible or amenable to direct measurement with these tools. Another adjustment that was made in the study, for simplicity, was that the individual rooms in the nurse/health and guidance suites (e.g., offices and waiting rooms) were measured as one large room for each suite.

After the dimensions of individual rooms at Cardozo were measured, their areas were calculated. A sum of the calculated areas for each functional room category and subcategory (i.e., large general classrooms, standard general classrooms, etc.) was then determined. A complete list of the individual rooms measured at the school, their school-assigned IDs, their floor dimensions, and their floor spaces is provided in Appendix B.

The area totals for each of the measured room categories and subcategories at Cardozo (i.e., Current), as well as the room quantity and capacity of each, were then compared with similar data from the standard ed specs for an 800 Student Model school (i.e., Proposed). This information is provided in Appendix C. A summary of floor space and student capacity for each of the room categories, for the existing building and standard ed specs, is provided in Table III.

In addition to examining the net floor spaces, the quantity of the existing site facilities at Cardozo was also compared to the standard ed specs for an 800 Student Model school. This information is listed in Table IV.

Table III: Comparison of Actual and Standards for Net Floor Space and Student Capacity at Cardozo

Room Category	Net Floor Space (ft <sup>2</sup> )		Student Capacity		
	Standard Ed Specs	Existing Building	Standard Ed Specs	Existing Building	DCPS Capacity
Core Academic	42,700	51,456	634	1,105	1,302
Career Tech. & Educ.	4,375	13,104	18	144	90
Media Center/Library	4,350	4,560	0	0	0
Visual Arts	1,600	1,240	21	21	42
Performing Arts	5,625	3,336	42	56	42
JROTC	2,000	6,668	21	21	0
Physical Education	19,800	21,234	84	42	42
Administration	5,440	13,048	0	0	0
Guidance	1,550	1,152	0	0	0
Dining/Commons	9,150	29,512	0	0	0
<b>Total</b>	<b>96,590</b>	<b>145,310</b>	<b>820</b>	<b>1,389</b>	<b>1,518</b>

Table IV: Comparison between Standard Ed Specs and Existing School  
Of Site Facilities at Cardozo

Facility	Quantity	
	Standard Ed Specs	Existing
Multi-Purpose Grassy Play Field	1	1
Press Box (10-15 people)	1	0
Concessions/Restrooms	1	0
Exterior Grounds Equipment	1	0
Exterior Athletic Storage	1	0
400 Meter Track, 200 Meter Straight-Away	1	1
Bleacher Seating for 1600	1	1
Long Jump & Triple on one side	1	0
Pole Vault Pit	1	0
Shot Put	1	0
Multi-Purpose Grassy Practice Field	1	0
Tennis (4 courts)	1	1
Outdoor Paved Play Area (3 full courts)	1	0
Fitness Trail (12-16 stations)	1	0
Baseball Field	1	0
Softball Field	1	0

## Conclusions

The District's existing high school inventory presents a unique challenge to the school renovation initiative currently underway within DCPS, because of the significant age of most of these buildings and the nature of their designs. 15 of the 18 schools were built prior to World War II, and many of them were built with grand civic specialty spaces, such as auditoriums and armories. Specific conclusions are:

- 1) The current DCPS Standard Education Specifications are unsuitable for modernizing most of the District's high schools, because of their inflexible floor space requirements. These schools contain large specialty spaces (including labs, shops, pools, auditoriums,



gymnasiums, armories, and rifle ranges), which either do not appear or are undersized in the ed specs.

- 2) The current gross floor space design standard of 192 GSF/S is unsuitable for space planning and project estimating in the modernization of the District's high schools. It may work for new construction or replacement of a high school, but 15 of the 18 high schools are expected to be modernized. It is a useful tool for master planning, but needs to be changed when preparing capital budgets.
- 3) The DCPS estimate for total enrollment capacity in all of the high schools of 18,171 students is an exaggeration of the actual capacity of these schools, given their design and the program requirements of the high schools. Consequently, the DCPS estimate that the high schools are as much as 30% underutilized is incorrect.
- 4) It is likely that the DCPS value for total existing *gross* floor space in all of the high schools of 3,868,811 GSF will need to be revised. If so, the DCPS estimate that there is 1,324,236 GSF of excess *gross* floor space in the high schools will also need revision.
- 5) The high schools are lacking so many of the site improvements (parking, field space, field houses, etc.) that, in effect, there are no site standards for the high schools.

## **Recommendations**

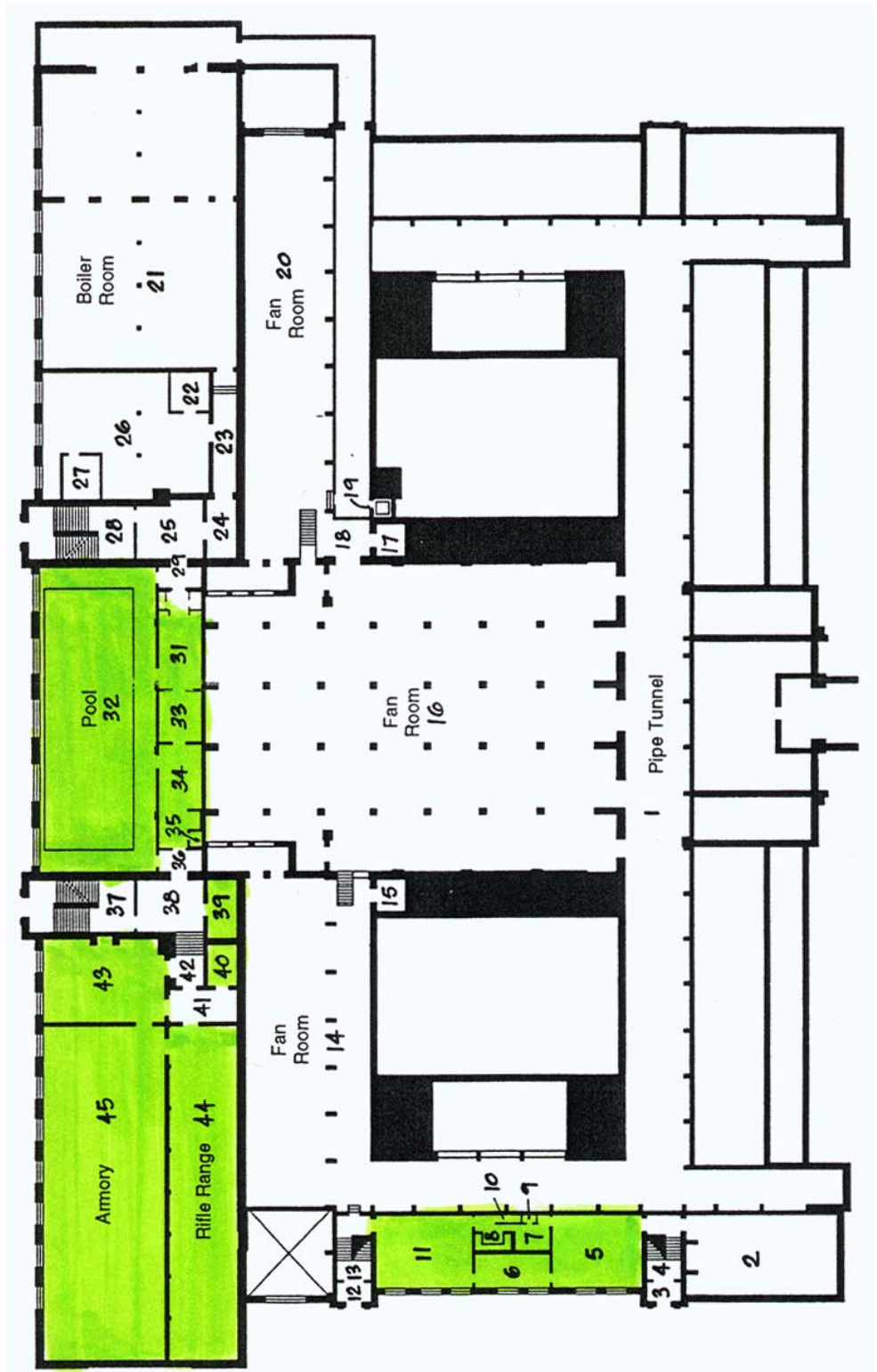
On a project-specific basis, architects, planners, local schools, and communities need to proceed in the high school planning process with common and accurate information, and to be creative in modernizing the existing buildings. Where necessary, they should make only modest changes to existing structures in order to make capital projects feasible, remembering that the program and the people are more important than the place. At a District level, DCPS needs to:

1. Revise the standard ed specs to allow greater flexibility. As it stands now, if the ed specs are strictly adhered to, then program requirements will not be met in existing schools without a complete demolition of their interiors, and at an extremely high cost.
2. Change the floor space design standard value of 192 GSF/S, or eliminate use of the standard altogether.
3. Calculate the quantity of *net* floor space in all of the high schools by measuring instructional and administrative space. This will help with the determination of enrollment capacities, and in the analysis of the current utilization of these schools.
4. Reexamine the quantity of total existing *gross* floor space in all of the high schools (3,868,811 GSF). This is critical to the determination of excess space.
5. Undertake site studies to determine whether structured parking or other improvements are possible to alleviate site constraint problems.

## **Appendices**

### ***APPENDIX A: SIMPLE FLOOR DIAGRAMS OF CARDOZO SENIOR HIGH SCHOOL and MCKINLEY TECH HIGH SCHOOL***

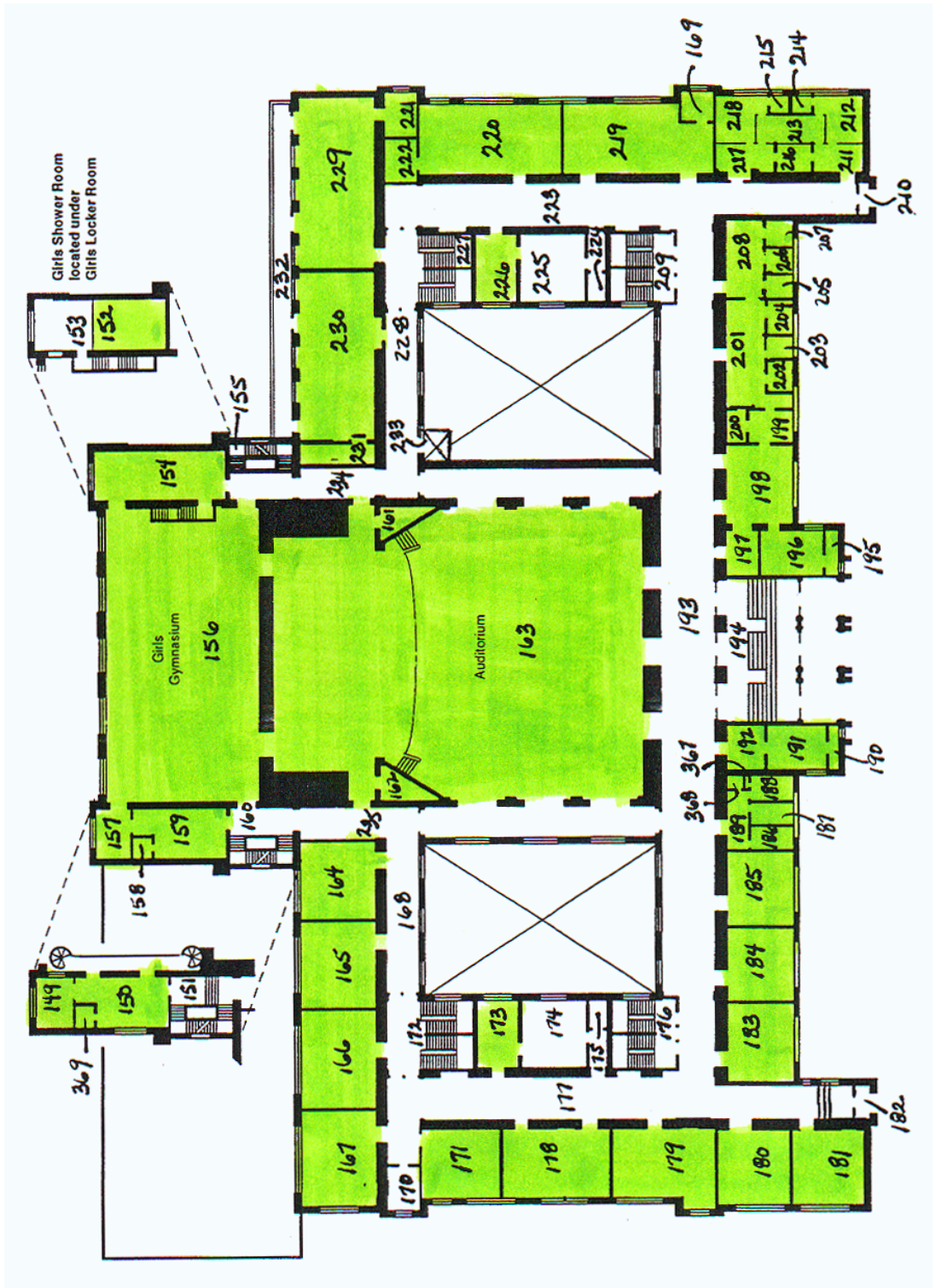
**Cardozo Senior High:  
Basement Floor**



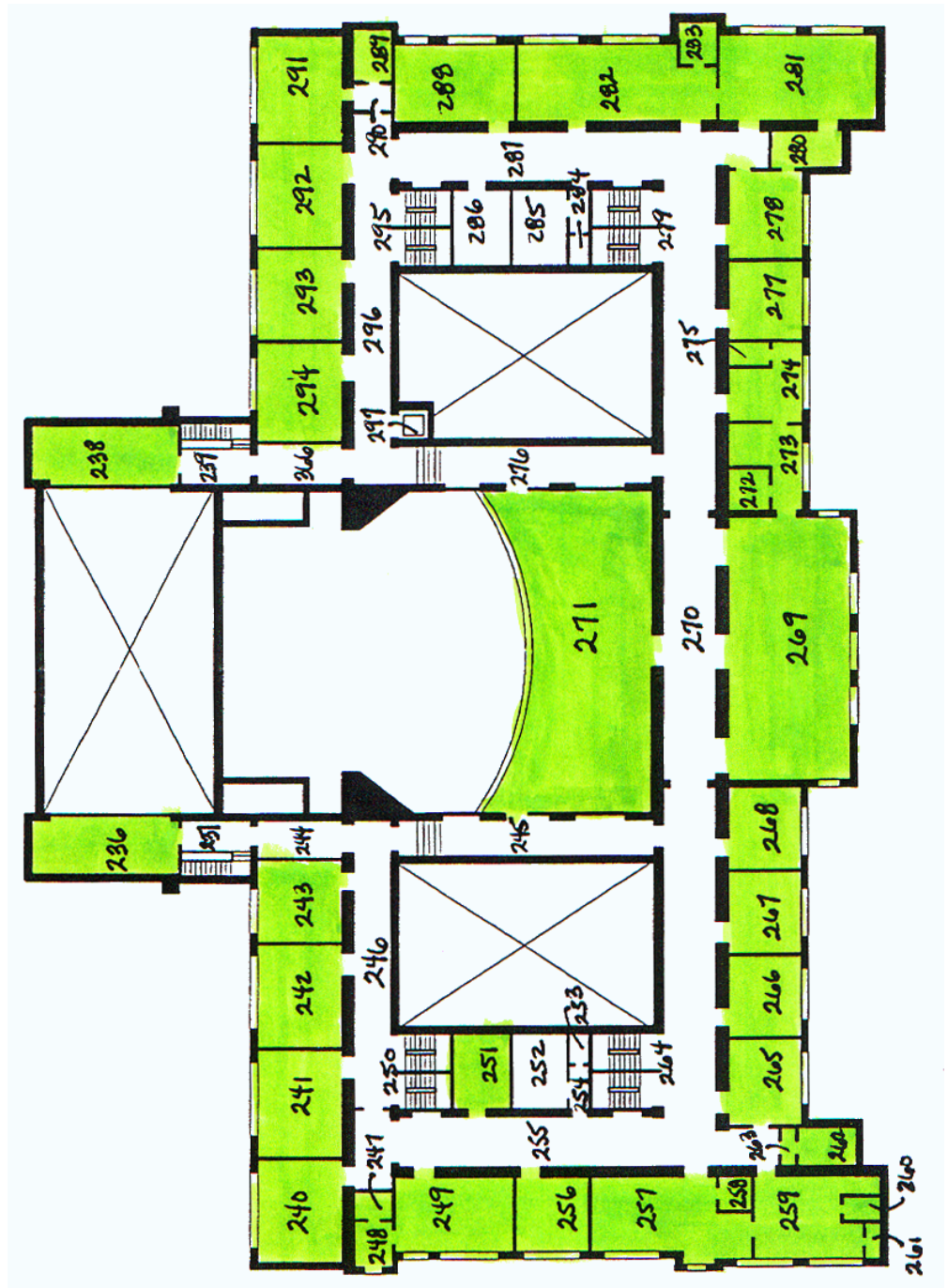
Cardozo Senior High:  
Ground Floor



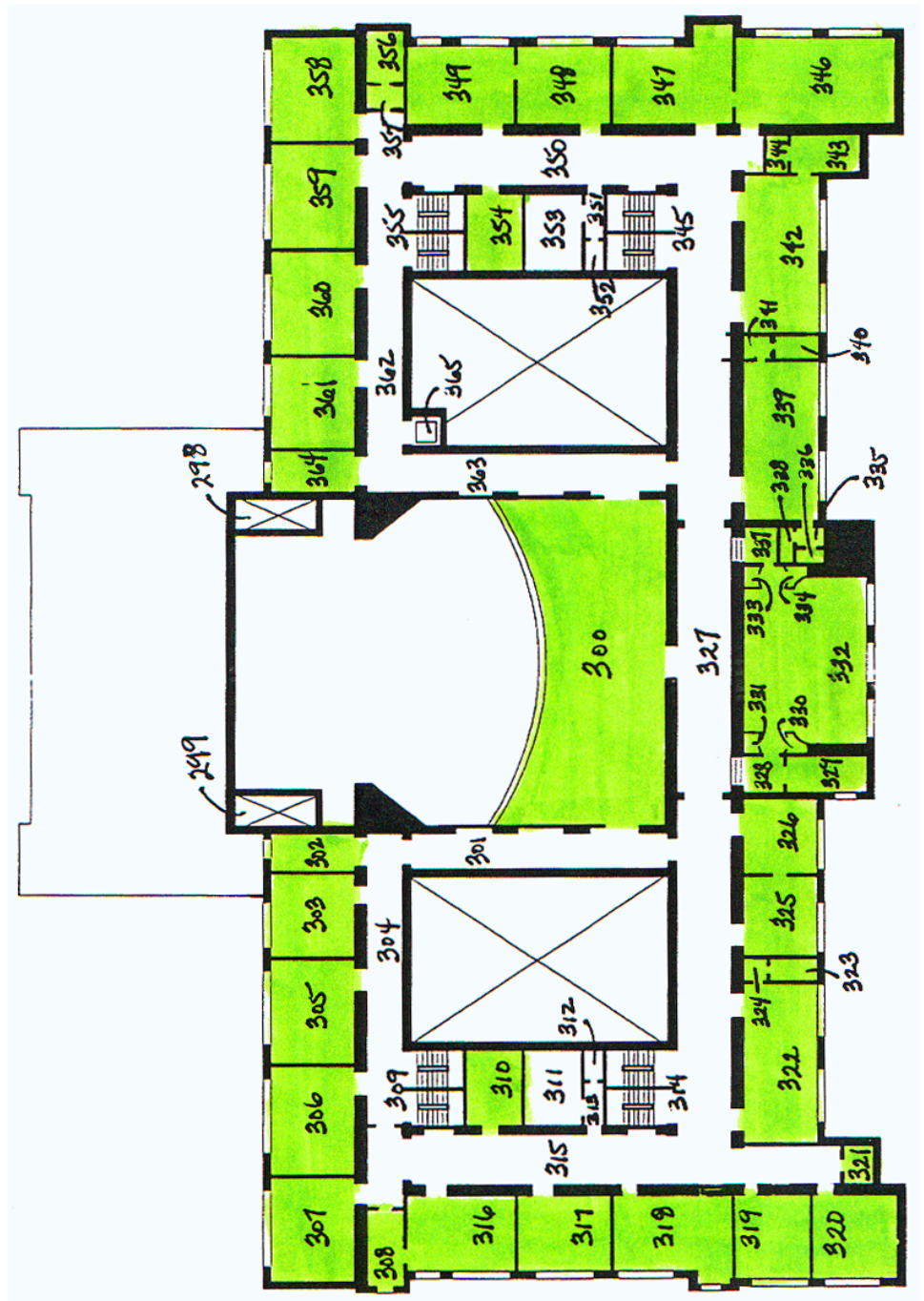
# Cardozo Senior High: First Floor



Cardozo Senior High:  
Second Floor



Cardozo Senior High:  
Third Floor





# Building Capacity Review

## Space Inventory

BUILDING: Cardozo  
 CLASSIFICATION: Senior High  
 POPULATION HOUSED: 9-12  
 CONSTRUCTION: 1916

ADDRESS: 13th & Clifton Streets, N.W.  
 WARD: 1  
 SQUARE FOOTAGE: 355,400 CAPACITY: 1563  
 CLUSTER: 10 EXTENDED USE:

SPACE	SPACE	SPACE	SPACE
NO. TYPE SPACE	NO. TYPE SPACE	NO. TYPE SPACE	NO. TYPE SPACE
1 Pipe Tunnel	48 Computer Lab	95 Classroom	142 Storage Room
2 Water Meter Room	49 Wood Shop	96 Storage Room	143 Vestibule
3 Vestibule	50 Storage Room	97 Vestibule	144 Book Room
4 Stairwell	51 Storage Room	98 Stairwell	145 Computer Lab
5 In School Suspension	52 Wood Shop	99 TANIFF	146 Computer Lab
6 In School Suspension	53 Electronics Lab	100 Office	147 Computer Lab
7 In School Suspension	54 Locker Room (Boys)	101 Business Mgr	148 Computer Lab
8 In School Suspension	55 Toilet (Boys)	102 Stairwell	149 Storage Room
9 In School Suspension	56 Storage Room (Towels)	103 Custodians Closet	150 Office (P.E)
10 In School Suspension	57 Shower Room (Boys)	104 Toilet (Boys)	151 Stairwell
11 In School Suspension	58 Closet	105 Office (Custodians)	152 Shower Room (Girls)
12 Vestibule	59 Passage	106 Stairwell	153 Stairs
13 Stairwell	60 Weightlifting Room	107 Office	154 Toilet/Lockers (Girls)
14 Fan Room	61 Stairwell	108 Office (Dietician)	155 Stairwell
15 VOID	62 Stairwell	109 Kitchen	156 Gymnasium (Girls)
16 Fan Room	63 Gymnasium (Boys)	110 Cafeteria	157 Office (Girls Gym)
17 VOID	64 Stairwell	111 Corridor	158 Toilet (Office)
18 Vestibule	65 Stairwell	112 Dressing Room	159 Physical Therapy
19 Elevator	66 Storage Room	(Kitch.)	Room
20 Fan Room	67 Dressing Area (Boys)	113 Elevator	160 Stairwell
21 Boiler Room	68 Laundry Room	114 Stairwell	161 Organ Pit Room
22 Office (Engineer)	69 Office	115 Storage Room	162 Dressing Room (Aud.)
23 Passage w/Steps	70 Storage Room	116 Office	163 Auditorium
24 Vestibule	71 Auto Mechanics Shop	117 Vestibule	164 Classroom
25 Vestibule	72 Weightlifting	118 Graphic Arts Lab	165 Classroom
26 Mechanical Room	73 "	119 Dark Room	166 Classroom
27 Storage Room	74 "	120 Dark Room	167 Classroom
28 Stairwell	75 Passage	121 Corridor	168 Corridor
29 Vestibule	76 Classroom	122 Office (Custodians)	169 Storage Rm.(near
30 Corridor (near #195)	77 Vestibule	123 Toilet (Girls)	#219)
31 Toilet/Locker Room	78 Classroom	124 Custodians Closet	170 Office
32 Swimming Pool	79 Classroom	125 Stairwell	171 Classroom
33 Shower Room	80 Vestibule	126 Vestibule	172 Stairwell
34 Locker Room	81 Classroom	127 Passage w/Steps	173 Office
35 Toilet (Pool)	82 Passage	128 Corridor	174 Toilet (Boys)
36 Vestibule	83 Storage Room	129 Classroom	175 Custodians Closet
37 Stairwell	84 Storage Room	130 Drivers Ed Room	176 Stairwell
38 Vestibule w/Steps	85 Storage Room	131 Vestibule	177 Corridor
39 Office (Pool)	86 Passage	132 Storage Room	178 Classroom
40 Storage Room	87 TANIFF	133 Office	179 Classroom
41 Vestibule	88 Corridor	134 Computer Lab	180 Classroom
42 Vestibule	89 Stairwell	135 Office	181 Classroom
43 Office (ROTC)	90 Vestibule	136 Storage Room	182 Vestibule
44 Rifle Range	91 Computer Lab	137 Storage Closet	183 Records
45 Armory	92 Storage Closet	138 School Store	184 Registration Room
46 Corridor (near #83)	93 Office	139 Meter Room	185 School Bank
47 Storage Room	94 Storage Closet	140 Vestibule	186 Office
		141 Vestibule w/Steps	187 Office
			188 Office (Attendance)

# Building Capacity Review

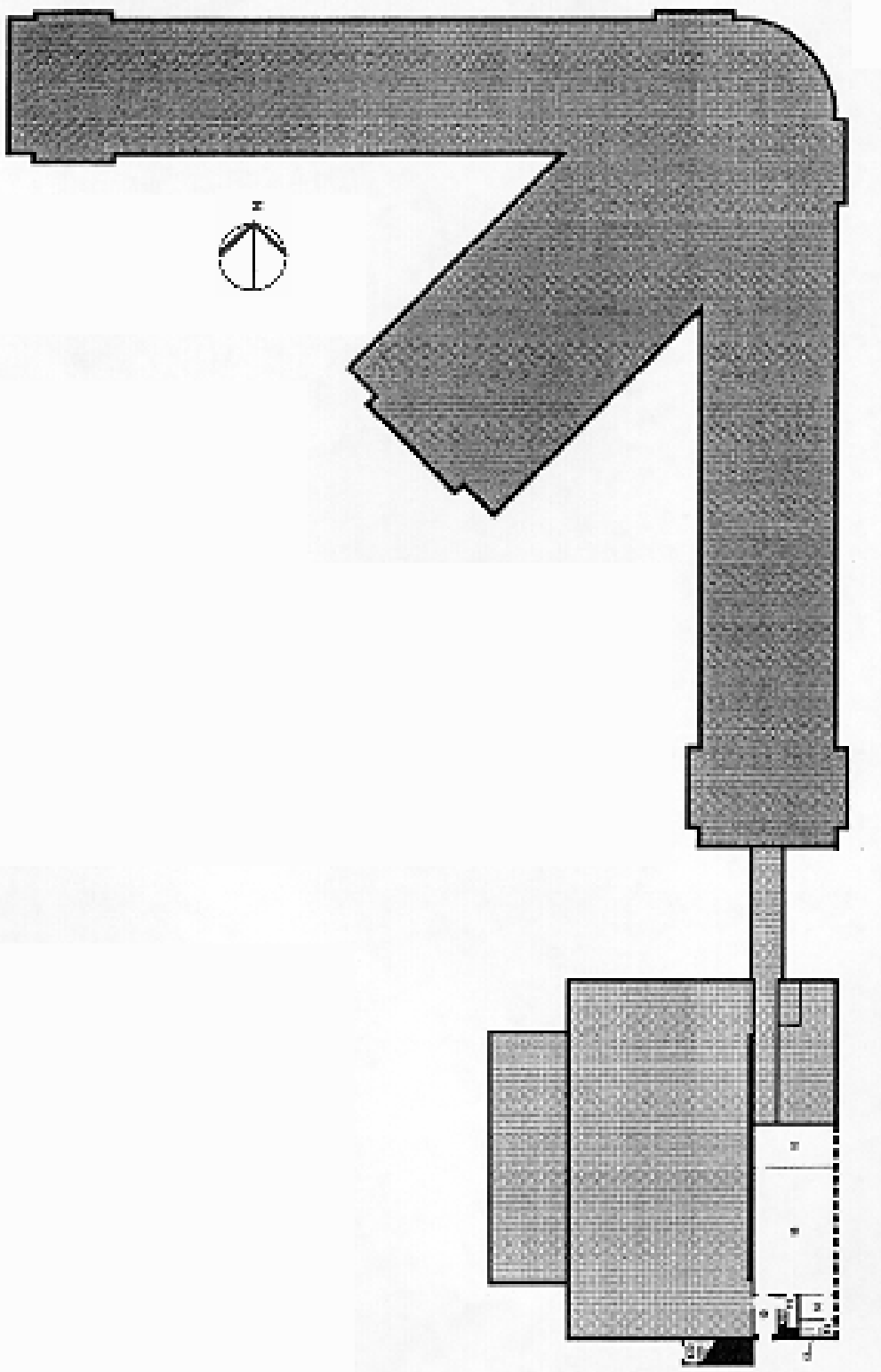
## Space Inventory

BUILDING: Cardozo  
 CLASSIFICATION: Senior High  
 POPULATION HOUSED: 9-12  
 CONSTRUCTION: 1916

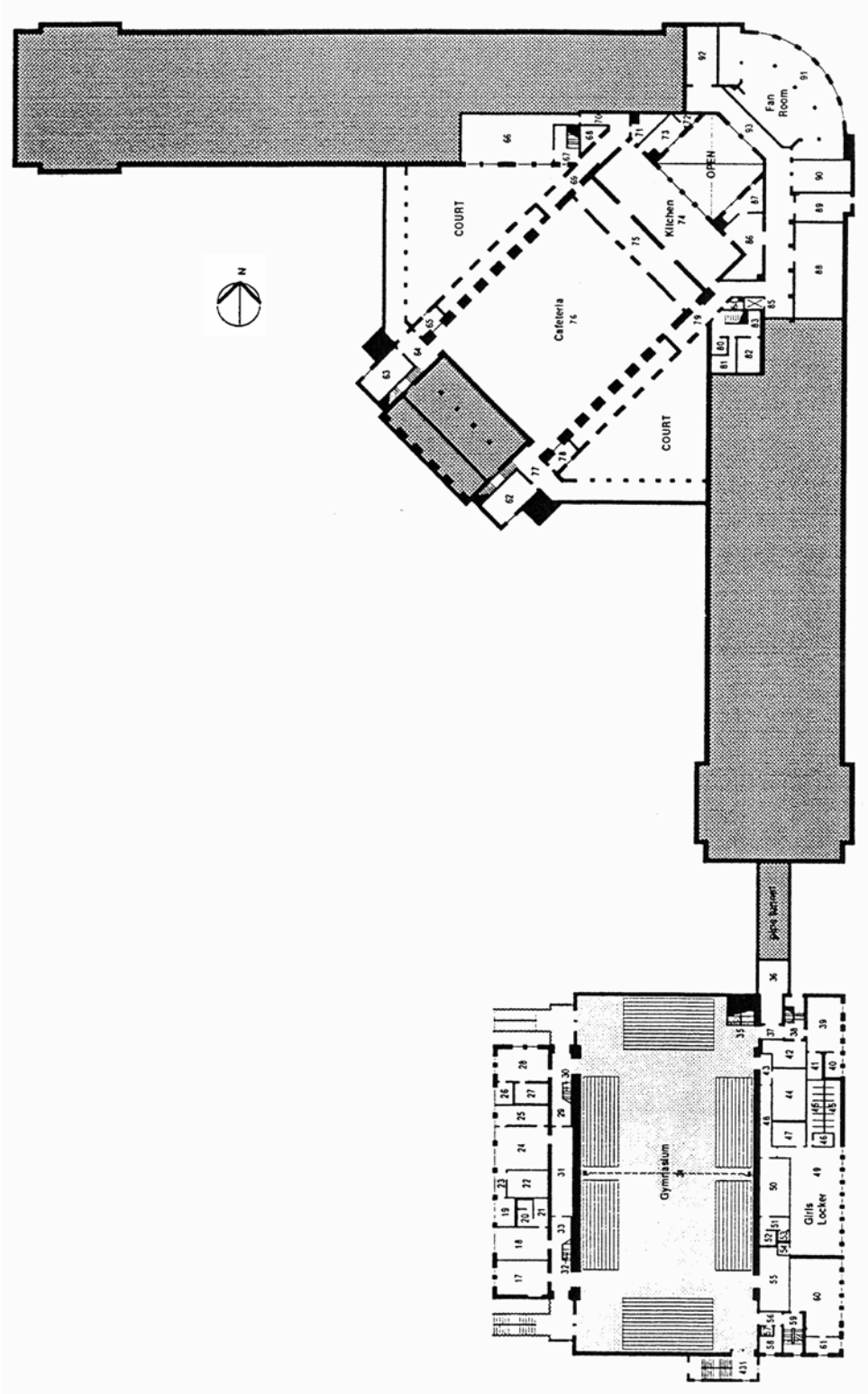
ADDRESS: 13th & Clifton Streets, N.W.  
 WARD: 1  
 SQUARE FOOTAGE: 355,400 CAPACITY: 1563  
 CLUSTER: 10 EXTENDED USE:

SPACE	SPACE	SPACE	SPACE
NO. TYPE SPACE	NO. TYPE SPACE	NO. TYPE SPACE	NO. TYPE SPACE
189 Waiting Room	235 Corridor	281 Science Lab	327 Corridor
190 Toilet (Asst. Principal)	236 Balcony	282 Science Lab	328 Vestibule w/Steps
191 Office (Asst. Principal)	237 Stairwell	283 Office	329 Storage Room
192 Outer Office	238 Balcony	284 Custodians Closet	330 Storage Closet
193 Corridor	239 Stairwell	285 Toilet (Girls)	331 Storage Closet
194 Stairs	240 Classroom	286 Storage Room	332 Music (Vocal)
195 Toilet (Principal)	241 Classroom	287 Corridor	333 Closet (Electrical)
196 Office (Principal)	242 Classroom	288 Science Lab	334 Storage Closet
197 Office	243 Classroom	289 Toilet (Women)	335 Vestibule
198 Main Office	244 Passage	290 Vestibule	336 Storage (Music)
199 Office (P.A. System)	245 Corridor w/Ramp	291 Teachers Lounge	337 Vestibule w/Steps
200 Storage Room	246 Corridor	292 Classroom -	338 Storage (Music)
201 Waiting Room	247 Storage Closet	293 Classroom	339 Music (Instrumental)
202 Office (Counselor)	248 Storage Room	294 Classroom	340 Storage Room
203 Office (Counselor)	249 Home Economics Lab	295 Stairwell	341 Storage Room
204 Office (Counselor)	250 Stairwell	296 Corridor	342 Art Room
205 Office (Counselor)	251 Storage Room	297 Elevator	343 Storage Room
206 Office (Counselor)	252 Toilet (Boys)	298 VOID	344 Storage Closet
207 Office (Counselor)	253 Custodians Closet	299 VOID	345 Stairwell
208 Waiting Room	254 Vestibule	300 Balcony	346 Classroom
209 Stairwell	255 Corridor	301 Corridor	347 Classroom
210 Vestibule	256 Living/Dining Rm.	302 Office	348 Classroom
211 Office	257 Home Economics Lab	303 Classroom	349 Classroom
212 Rest Room (Health)	258 Storage Room	304 Corridor	350 Corridor
213 Office	259 Classroom	305 Classroom	351 Vestibule
214 Toilet (Health)	260 Storage Room	306 Classroom	352 Custodians Closet
215 Toilet (Health)	261 Storage Closet	307 Classroom	353 Toilet (Girls)
216 Office (Nurse)	262 Office	308 Storage Room	354 Office
217 Waiting Room (Health)	263 Waiting Room	309 Stairwell	355 Stairwell
218 Rest Room (Health)	264 Stairwell	310 Office	356 Office
219 Classroom	265 Classroom	311 Toilet (Boys)	357 Outer Office
220 Science Lab	266 Classroom	312 Custodians Closet	358 Classroom
221 Storage Room	267 Classroom	313 Vestibule	359 Classroom
222 Storage Room	268 Classroom	314 Stairwell	360 Classroom
223 Corridor	269 Library	315 Corridor	361 Classroom
224 Custodians Closet	270 Corridor	316 Classroom	362 Corridor
225 Toilet (Girls)	271 Balcony	317 Classroom	363 Corridor
226 Storage Room	272 Office (Library)	318 Classroom	364 Resource Room
227 Stairwell	273 Work Room (Library)	319 Classroom	365 Elevator
228 Corridor	274 Resource Rm.(Library)	320 Classroom	366 Passage (near #239)
229 Science Lab	275 Storage Room (Library)	321 Office	367 Storage Closet(nr. 188)
230 Science Lab	276 Corridor w/Ramp	322 Art Room	368 Computer Control Rm. (near#188)
231 Storage Room	277 Classroom	323 Storage Room	369 Toilet (Ofc) (near #150)
232 Greenhouse	278 Classroom	324 Vestibule	
233 Elevator	279 Stairwell	325 Resource Room	
234 Corridor	280 Storage Room	326 Conference Room	

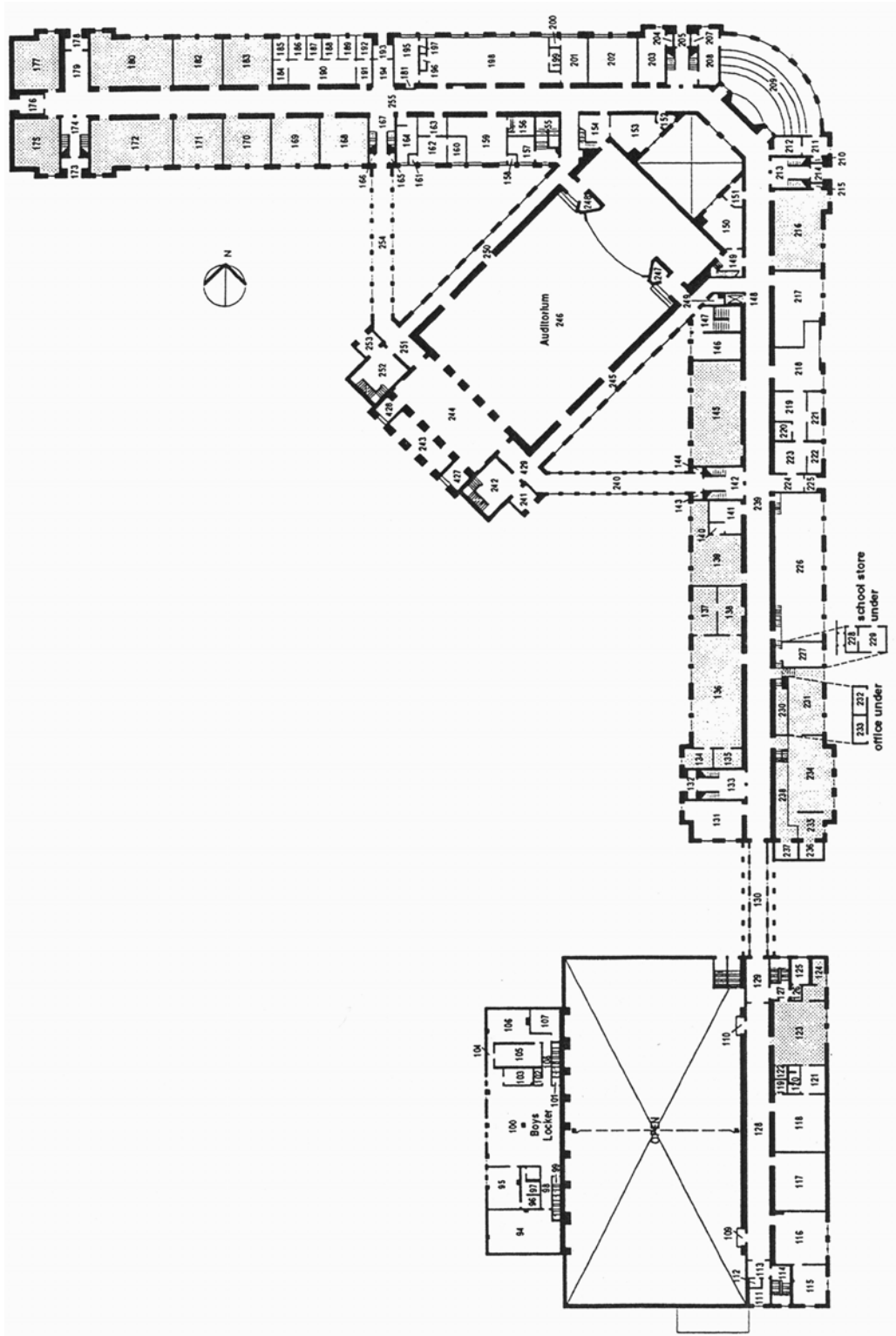
**McKinley High School:  
Basement Floor**



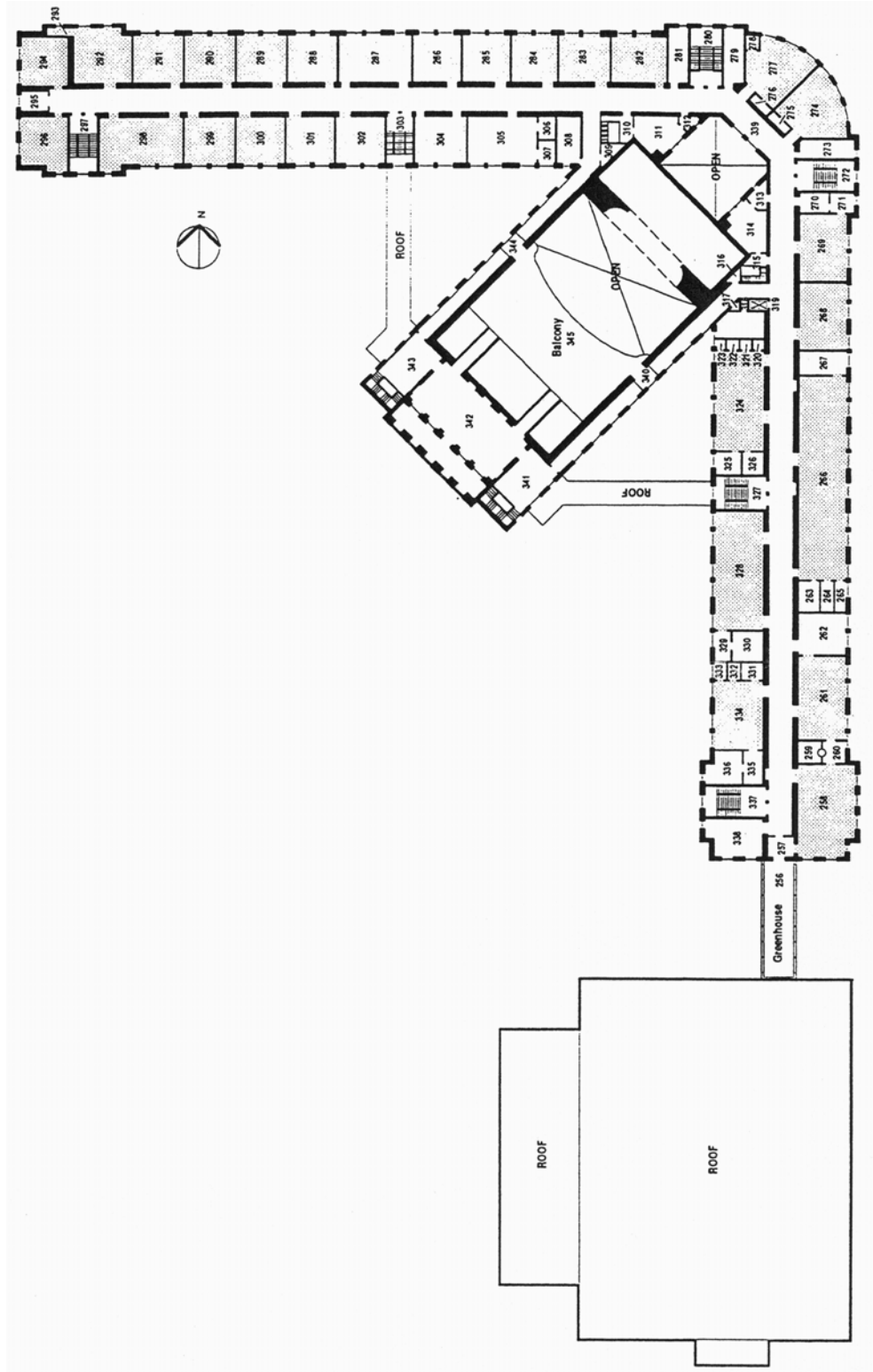
**McKinley High School:  
Ground Floor**



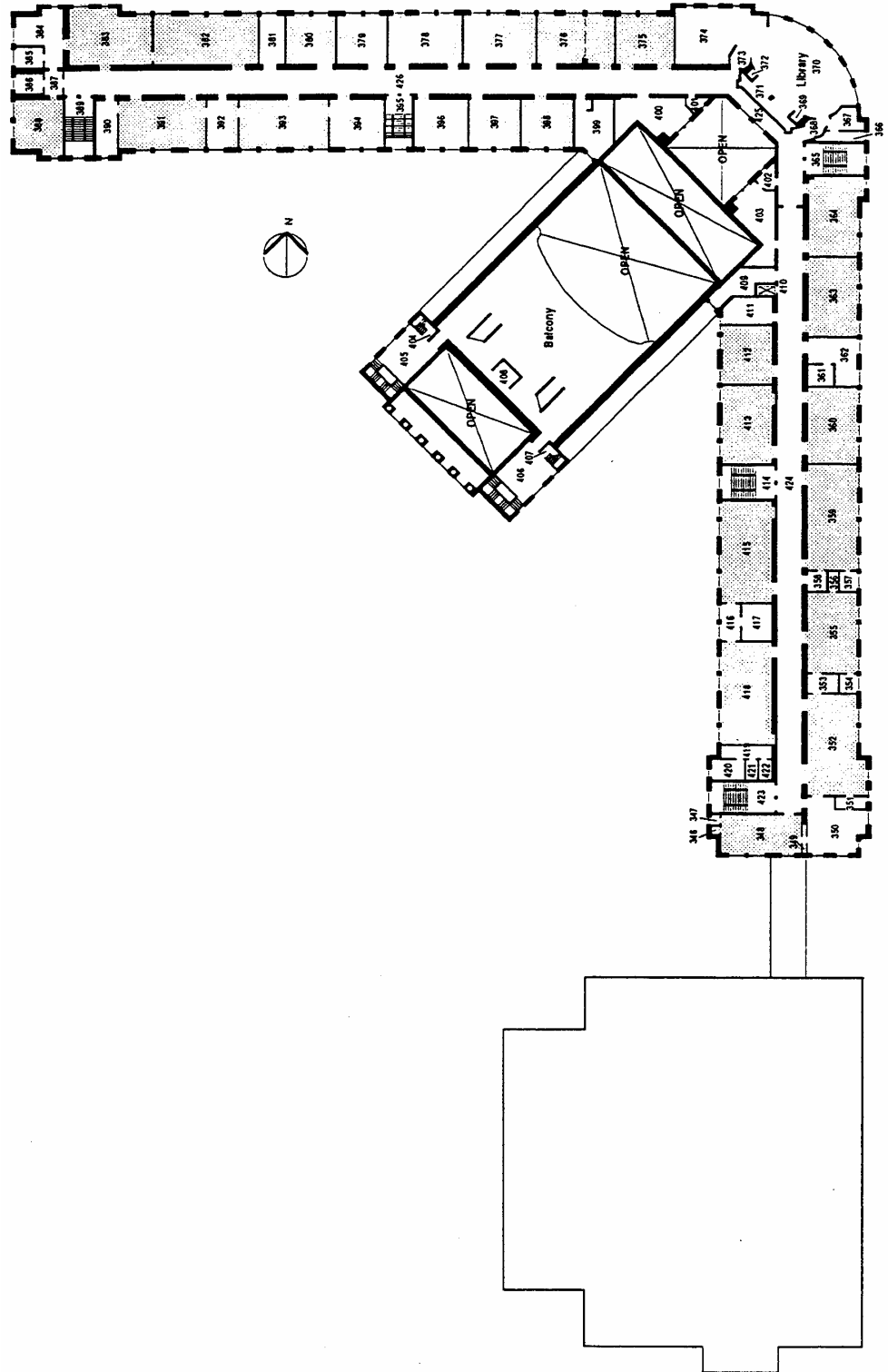
McKinley High School:  
First Floor



# McKinley High School: Second Floor



McKinley High School:  
Third Floor



# Building Capacity Review

## space inventory

BUILDING: McKinley  
 CLASSIFICATION: Senior High  
 POPULATION HOUSED: 9-12  
 CONSTRUCTION: 1928, 57

ADDRESS: 2nd & T Streets, N.E.  
 WARD: 5  
 SQUARE FOOTAGE: 282,200 CAPACITY: 1491  
 CLUSTER: 4 EXTENDED USE:

SPACE NO. TYPE SPACE	SPACE NO. TYPE SPACE	SPACE NO. TYPE SPACE	SPACE NO. TYPE SPACE
1 Smoke Stack	48 Hallway	95 Office	142 Stairwell
2 Office (Engineer)	49 Locker Room (Girls)	% Locker Room	143 Custodians Closet
3 Toilet (Engineer)	50 Office (Girls Gym)	97 Toilet/Shower (Office)	144 Storage Closet (Cust.)
4 Toilet (Engineer)	51 Locker Room	98 Passage	145 Art Room
5 Pump Room	52 Toilet (Office)	99 Stairs	146 Toilet (Boys)
6 Boiler Room	53 Shower (Office)	100 Locker Room (Boys)	147 Stairwell
7 Stairs	54 Custodians Closet	101 Stairs	148 Elevator
8 Old Coal Storage Room	55 Storage (P.E.)	102 Custodians Closet	149 Vestibule w/Steps
9 Flammable Storage	56 Passage	103 Toilet (Boys)	150 Office (Attendance)
10 Vestibule	57 Custodians Closet	104 Passage	151 Toilet (Men)
11 Stairwell	58 Storage Room	105 Shower Room (Boys)	152 Toilet (Men)
12 Toilet/Shower (Office)	59 Stairwell	106 Drying Area (Boys)	153 Storage Room
13 Locker Room	60 Weightlifting Room	107 Storage Room	154 Stairs/Vestibule
14 Office	61 Laundry Room	108 Passage	155 Stairwell
15 Armory	62 Toilet (Boys)	109 Press Box	156 Mechanical Room
16 Resource Room	63 Toilet (Girls)	110 Press Box	157 Toilet (Girls)
17 Storage Room	64 Stairs/Vestibule	111 Toilet (Men)	158 Toilet (File Room)
18 Office	65 Storage Room	112 Custodians Closet	159 File Room
19 Toilet (Boys)	66 Teachers Dining Room	113 Vestibule	160 Exam Room (Health)
20 Toilet/Shower (Office)	67 Stairwell	114 Stairwell	161 Toilet (Health)
21 Locker Room	68 Storage (Kitchen)	115 Storage Room	162 Office (Nurse)
22 Taping Room	69 Hallway	116 Resource Room (Gym)	163 Waiting Room
23 Passage	70 Passage	117 Resource Room (Gym)	164 Toilet (Teachers)
24 Team Room	71 Storage (Kitchen)	118 Resource Room (Gym)	165 Custodians Closet
25 Shower Room (Boys)	72 Toilet (Office)	119 Storage Room	166 Storage Closet (Cust-)
26 Toilet (Boys)	73 Office (Dietician)	120 Toilet (Office)	167 Stairwell
27 Shower Room (Boys)	74 Kitchen	121 Office	168 Classroom
28 Team Room	75 Food Service Area	122 Storage Room	169 Classroom
29 Passage	76 Cafeteria	123 Classroom	170 Classroom
30 Stairs	77 Stairs/Vestibule	124 Work Room	171 Classroom
31 Corridor	78 Dishwashing Room	125 Toilet (Girls)	172 Classroom
32 Stairs	79 Hallway	126 Vestibule	173 Vestibule
33 Passage	80 Toilet (Kitchen)	127 Stairwell	174 Stairwell
34 Gymnasium	81 Dressing Rm. (Kitch.)	128 Corridor	175 Classroom
35 Stairs	82 Storage Room (Cust.)	129 Passage	176 Vestibule
36 Storage (Chairs)	83 Stairwell	130 Connecting Corridor	177 Classroom
37 Passage	84 Storage Room	131 Resource Room	178 Vestibule
38 Stairwell	85 Elevator	132 Vestibule	179 Hallway
39 Team Room	86 Can Wash	133 Stairwell	180 Classroom
40 Shower Room (Girls)	87 Storage (Kitchen)	134 Storage Room	181 Storage
41 Toilet (Girls)	88 Storage Room (Cust.)	135 Storage Room	Closet(nr.#195)
42 Taping Room	89 Generator Room	136 Graphic Arts Lab	182 Classroom
43 Passage	90 Meter Room (Elect)	137 Dark Room	183 Classroom
44 Storage (P.E.)	91 Fan Room	138 Dark Room	184 File Room
45 Shower Room (Girls)	92 Storage Room	139 Photography Studio	185 Office (Counselor)
46 Storage Room	93 Pipe Tunnel	Lab	186 Office (Counselor)
47 Toilet (Girls)	94 Storage Room	140 Vestibule	187 Office (Counselor)
		141 Dark Room	188 Office (Counselor)



# Building Capacity Review

## space inventory

BUILDING: McKinley  
 CLASSIFICATION: Senior High  
 POPULATION HOUSED: 9-12  
 CONSTRUCTION: 1928, 57

ADDRESS: 2nd & T Streets, N.E.  
 WARD: 5  
 SQUARE FOOTAGE: 282,200 CAPACITY: 1491  
 CLUSTER: 4 EXTENDED USE:

SPACE	NO. TYPE SPACE	SPACE	SPACE
NO. TYPE SPACE		NO. TYPE SPACE	NO. TYPE SPACE
189 Office (Counselor)	235 Storage Room	281 Office	327 Stairwell
190 Waiting Room	236 Storage Room	282 Language Lab	328 Power Mechanics
191 Copy Room	237 Storage Room	283 Classroom	Shop
192 Office (Counselor)	238 Storage Area	284 Classroom	329 Storage Room
193 Vestibule	239 Corridor	285 Classroom	330 Storage Room
194 Hallway	240 Connecting Corridor	286 Classroom	331 Storage Room (Music)
195 Office (Asst Principal)	241 Vestibule	287 Classroom	332 Storage Room (Music)
196 Telephone Room	242 Stairs/Vestibule	288 Classroom	333 Practice Room (Music)
197 Toilet (Asst. Principal)	243 Vestibule	289 Classroom	334 Music (Instrumental)
198 Main Office	244 Lobby	290 Classroom	335 Office
199 Toilet (Staff)	245 Corridor	291 Classroom	336 Storage Room (Music)
200 Toilet (Principal)	246 Auditorium	292 Classroom	337 Stairwell
201 Office (Principal)	247 Storage Room	293 Storage Closet	338 Resource Room
202 School Bank	248 Storage Room	294 Classroom	339 Corridor
203 Office	249 Storage Room (Cust.)	295 Teacher Prep. Room	340 Corridor
204 Vestibule	250 Corridor	296 Classroom	341 Stairs/Vestibule
205 Vestibule	251 Passage	297 Stairwell	342 Commons Area
206 Stairwell	252 Stairs/Vestibule	298 Graphic Arts Lab	343 Stairs/Vestibule
207 Storage Room	253 Vestibule	299 Classroom	344 Corridor
208 Office (Attendance)	254 Connecting Corridor	300 Classroom	345 Balcony
209 Lecture Room	255 Corridor	301 Classroom	346 Storage Closet
210 Storage Closet	256 Greenhouse	302 Classroom	347 Storage Closet
211 Office	257 Vestibule	303 Stairwell	348 Home Economics Lab
212 Outer Office	258 Science Lab	304 Classroom	349 Storage Room
213 Stairwell	259 Dark Room	305 Teachers Lounge	350 living/Dining Room
214 Vestibule	260 Storage Room	306 Toilet (Women)	351 Storage Room
215 Storage Closet	261 Science Lab	307 Toilet (Men)	352 Food Lab
216 Communications	262 Lecture Room	308 Toilet (Girls)	353 Laundry Room
Studio	263 Storage Room	309 Fan Room	354 Storage Room
217 Book Room	264 Storage Room	310 Stairs	355 Clothing Lab
218 Storage Room (Cust.)	265 Storage Room	311 Office	356 Storage Room
219 Office	266 Wood Shop	312 Toilet (Men)	357 Storage Room
220 Storage Room	267 Storage Room	313 Toilet (Women)	358 Storage Room
221 Office (Custodians)	268 Computer Lab	314 Office	359 Home Economics Lab
222 Kitchenette	269 Typing Room	315 Stairs	360 Computer Lab
223 Office (Custodians)	270 Teacher Prep-Room	316 Storage Closet (Cust.)	361 Storage Room
224 Hallway	271 Office	317 Storage Closet (Cust.)	362 Resource Room
225 Vestibule	272 Stairwell	318 Toilet (Boys)	363 Mech. Drawing Shop
226 Student Lounge	273 Office	319 Elevator	364 Typing Room
227 Office/Resource Room	274 Computer Lab	320 Practice Room (Music)	365 Stairwell
228 Storage Room	275 Storage Closet	321 Practice Room (Music)	366 Storage Room
229 Storage Room	276 Storage Closet	322 Practice Room (Music)	367 Office (Library)
230 Storage Area	277 Classroom	323 Practice Room (Music)	368 Vestibule
231 Drivers Ed Room	278 Storage Closet	324 Music (Vocal)	369 Toilet (library)
232 Storage Room	279 Office	325 Storage Room	370 Library
233 Office	280 Stairwell	326 Storage Room (Music)	371 Library Classroom
234 Classroom			372 Storage Closet
SPACE			

# Building Capacity Review

## space inventory

BUILDING: McKinley  
 CLASSIFICATION: Senior High  
 POPULATION HOUSED: 9-12  
 CONSTRUCTION: 1928, 57

ADDRESS: 2nd & T Streets, N.E.  
 WARD: 5  
 SQUARE FOOTAGE: 282,200 CAPACITY: 1491  
 CLUSTER: 4 EXTENDED USE:

SPACE NO. TYPE SPACE	SPACE NO. TYPE SPACE	SPACE NO. TYPE SPACE	SPACE NO. TYPE SPACE
373 Vestibule	388 Classroom	403 Office (Asst Principal)	418 Pre-Engineering Shop
374 Library Extension	389 Stairwell	404 Stairs	419 Storage Room
375 Classroom	390 Teacher Prep. Room	405 Stairs	420 Storage Room
376 Classroom (flex. part.)	391 Science Lab	406 Stairs	421 Storage Room
377 Classroom	392 Storage (Science)	407 Stairs	422 Storage Room
378 Classroom	393 Science Lab	408 Projection Booth	423 Stairwell
379 Classroom	394 Lecture Room	409 Office	424 Corridor
380 Classroom	395 Stairwell	410 Elevator	425 Passage
381 Teacher Prep. Room	396 Computer Lab	411 Toilet (Boys)	426 Corridor
382 Science Lab	397 Classroom	412 Mech. Drawing Shop	427 Office
383 Science Lab	398 Computer Lab	413 Radio Studio Lab	(Secur.)(m#243)
384 Lecture Room	399 Toilet (Girls)	414 Stairwell	428 Office
385 Dark Room	400 T.V. Studio	415 Electronics Lab	(Secur.)(nr#243)
386 Dark Room	401 Toilet (Men)	416 Office	429 Passage (near #244)
387 Vestibule	402 Toilet (Women)	417 Storage Room	430 Stairwell (near #10)
			431 Stairwell (near #34)

**APPENDIX B**  
**LIST OF ROOMS MEASURED AT CARDOZO**

Appendix B: List of Rooms Measured at Cardozo

Room	Room ID	Length (ft.)	Width (ft.)	Area (sq. ft.)
<b>CORE ACADEMIC</b>				
Large General Classroom	219	48	24	1,152
Large General Classroom	342	44	24	1,056
Large General Classroom	346	48	24	1,152
<b>Subtotal</b>				<b>3,360</b>
Standard General Classroom	165	30	24	720
Standard General Classroom	166	30	24	720
Standard General Classroom	167	30	24	720
Standard General Classroom	171	30	24	720
Standard General Classroom	178	30	24	720
Standard General Classroom	179	30	24	720
Standard General Classroom	240	30	24	720
Standard General Classroom	241	30	24	720
Standard General Classroom	242	30	24	720
Standard General Classroom	292	30	24	720
Standard General Classroom	293	30	24	720
Standard General Classroom	294	30	24	720
Standard General Classroom	305	30	24	720
Standard General Classroom	306	30	24	720
Standard General Classroom	307	30	24	720
Standard General Classroom	316	30	24	720
Standard General Classroom	317	30	24	720
Standard General Classroom	318	30	24	720
Standard General Classroom	347	30	24	720
Standard General Classroom	348	30	24	720
Standard General Classroom	349	30	24	720
Standard General Classroom	358	30	24	720
Standard General Classroom	359	30	24	720
Standard General Classroom	360	30	24	720
Standard General Classroom	361	30	24	720
<b>Subtotal</b>				<b>18,000</b>
Small General Classroom	95	24	24	576
Small General Classroom	129	24	24	576
Small General Classroom	164	24	24	576
Small General Classroom	180	24	24	576
Small General Classroom	181	24	24	576
Small General Classroom	243	24	24	576
Small General Classroom	277	24	24	576
Small General Classroom	278	24	24	576
Small General Classroom	303	24	24	576
Small General Classroom	319	24	24	576
Small General Classroom	320	24	24	576
<b>Subtotal</b>				<b>6,336</b>
Science Lab	220	48	24	1,152
Science Lab	229	54	24	1,296
Science Lab	230	54	24	1,296
Science Lab	281	48	24	1,152
Science Lab	282	58	24	1,392

Appendix B: List of Rooms Measured at Cardozo

Room	Room ID	Length (ft.)	Width (ft.)	Area (sq. ft.)
Science Lab	288	38	24	912
<b>Subtotal</b>				<b>7,200</b>
Computer Lab	48	20	14	280
Computer Lab	91	36	20	720
Computer Lab	134	48	24	1,152
Computer Lab	145	22	22	484
Computer Lab	146	22	22	484
Computer Lab	148	22	22	484
Computer Lab	147	22	22	484
<b>Subtotal</b>				<b>4,088</b>
Resource Room	325	26	24	624
<b>Subtotal</b>				<b>624</b>
Special Education Classroom	76	30	24	720
Special Education Classroom	78	30	24	720
Special Education Classroom	79	30	24	720
Special Education Classroom	81	30	24	720
Special Education Classroom	265	24	24	576
Special Education Classroom	266	24	24	576
Special Education Classroom	267	24	24	576
Special Education Classroom	268	24	24	576
Special Education Classroom	259	40	24	960
<b>Subtotal</b>				<b>6,144</b>
Driver Education Classroom	130	24	24	576
<b>Subtotal</b>				<b>576</b>
Teachers Lounge	291	31	24	744
<b>Subtotal</b>				<b>744</b>
School Store	138	36	24	864
<b>Subtotal</b>				<b>864</b>
Academic Storage Room	92	8	4	32
Academic Storage Room	94	8	4	32
Academic Storage Room	96	24	12	288
Academic Storage Room	132	16	12	192
Academic Storage Room	136	12	10	120
Academic Storage Room	142	26	20	520
Academic Storage Room	200	12	8	96
Academic Storage Room	221	14	6	84
Academic Storage Room	222	14	6	84
Academic Storage Room	226	24	14	336
Academic Storage Room	231	24	10	240
Academic Storage Room	251	20	14	280
Academic Storage Room	280	26	12	312
Academic Storage Room	286	20	14	280
Academic Storage Room	308	20	12	240
Academic Storage Room	343	24	12	288

Appendix B: List of Rooms Measured at Cardozo

Room	Room ID	Length (ft.)	Width (ft.)	Area (sq. ft.)
Academic Storage Room	344	12	8	96
<b>Subtotal</b>				<b>3,520</b>
<b>TOTAL CORE ACADEMIC</b>				<b>51,456</b>
<b>CAREER TECH/EDUC</b>				
Electronics Lab	53	38	30	1,140
<b>Subtotal</b>				<b>1,140</b>
Auto Mechanics Shop	71	62	58	3,596
<b>Subtotal</b>				<b>3,596</b>
Graphic Arts Lab	118	84	24	2,016
<b>Subtotal</b>				<b>2,016</b>
Wood Shop	52	76	28	2,128
Wood Shop	49	30	30	900
<b>Subtotal</b>				<b>3,028</b>
Home Economics Lab	249	40	24	960
Home Economics Lab	257	52	24	1,248
Home Economics Lab	256	24	20	480
<b>Subtotal</b>				<b>2,688</b>
Career Tech Storage Room	47	22	18	396
Career Tech Storage Room	247	12	8	96
Career Tech Storage Room	248	12	12	144
<b>Subtotal</b>				<b>636</b>
<b>TOTAL CAREER TECH/EDUC</b>				<b>13,104</b>
<b>MEDIA CENTER/LIBRARY</b>				
Stacks	269	80	42	3,360
<b>Subtotal</b>				<b>3,360</b>
Office	273	24	25	600
<b>Subtotal</b>				<b>600</b>
Work Room	274	24	25	600
<b>Subtotal</b>				<b>600</b>
<b>TOTAL MEDIA CENTER/LIBRARY</b>				<b>4,560</b>
<b>VISUAL ARTS</b>				
Art Classroom	322	47	24	1,128
<b>Subtotal</b>				<b>1,128</b>
Art Storage Room	323	14	8	112

Appendix B: List of Rooms Measured at Cardozo

Room	Room ID	Length (ft.)	Width (ft.)	Area (sq. ft.)
<b>Subtotal</b>				<b>112</b>
<b>TOTAL VISUAL ARTS</b>				<b>1,240</b>
<b>PERFORMING ARTS</b>				
Choral Classroom	332	45	40	1,800
<b>Subtotal</b>				<b>1,800</b>
Instrumental Classroom	339	46	24	1,104
<b>Subtotal</b>				<b>1,104</b>
Choral Storage Room	329	24	12	288
Choral Storage Room	340	12	6	72
Choral Storage Room	341	12	6	72
<b>Subtotal</b>				<b>432</b>
<b>TOTAL PERFORMING ARTS</b>				<b>3,336</b>
<b>JROTC</b>				
Armory	45	98	36	3,528
<b>Subtotal</b>				<b>3,528</b>
Rifle Range	44	98	22	2,156
<b>Subtotal</b>				<b>2,156</b>
Office	43	36	24	864
<b>Subtotal</b>				<b>864</b>
JROTC Storage Room	40	12	10	120
<b>Subtotal</b>				<b>120</b>
<b>TOTAL JROTC</b>				<b>6,668</b>
<b>PHYSICAL EDUCATION</b>				
Gymnasium (Boys)	63	94	48	4,512
Gymnasium (Girls)	156	94	48	4,512
Balconies	236;238	48	36	1,728
<b>Subtotal</b>				<b>10,752</b>
PE Lockers (Boys)	54-55	22	22	484
PE Showers (Boys)	57	22	20	440
PE Lockers (Girls)	154	42	14	588
PE Showers (Girls)	152	25	14	350
<b>Subtotal</b>				<b>1,862</b>
Athletic Lockers	67	22	18	396
<b>Subtotal</b>				<b>396</b>

Appendix B: List of Rooms Measured at Cardozo

Room	Room ID	Length (ft.)	Width (ft.)	Area (sq. ft.)
Swimming Pool	32	94	32	3,008
Pool Lockers/Toilets	31;33-35	80	14	1,120
Pool Office/Storage	39-40	28	10	280
<b>Subtotal</b>				<b>4,408</b>
Fitness/Weight Room	60	24	22	528
Fitness/Weight Room	72	60	22	1,320
<b>Subtotal</b>				<b>1,848</b>
Department Office	150;157			680
<b>Subtotal</b>				<b>680</b>
Training/Physical Therapy				480
<b>Subtotal</b>				<b>480</b>
Laundry	68	22	18	396
<b>Subtotal</b>				<b>396</b>
P.E. Storage Room	66	22	10	220
P.E. Storage Room	149	16	12	192
<b>Subtotal</b>				<b>412</b>
<b>TOTAL PHYSICAL EDUCATION</b>				<b>21,234</b>
<b>ADMINISTRATION</b>				
Principal's Office	195-197	38	14	532
<b>Subtotal</b>				<b>532</b>
Assistant Principal's Office	190-192	38	14	532
<b>Subtotal</b>				<b>532</b>
Administration Offices	198-199	36	22	792
<b>Subtotal</b>				<b>792</b>
Administration Offices	186-189	24	24	576
<b>Subtotal</b>				<b>576</b>
Administration Offices	100-101	38	12	456
<b>Subtotal</b>				<b>456</b>
Administration Offices	133;173;262;310;321;354;356;357			2,024
<b>Subtotal</b>				<b>2,024</b>
Registration Room	184	24	24	576
<b>Subtotal</b>				<b>576</b>
Records	183	24	24	576
<b>Subtotal</b>				<b>576</b>



Appendix B: List of Rooms Measured at Cardozo

Room	Room ID	Length (ft.)	Width (ft.)	Area (sq. ft.)
Nurse/Health Suite	211-218	48	24	1,152
<b>Subtotal</b>				<b>1,152</b>
School Bank	185	24	24	576
<b>Subtotal</b>				<b>576</b>
Book Room	144	38	12	456
<b>Subtotal</b>				<b>456</b>
In School Suspension	5-11	80	22	1,760
<b>Subtotal</b>				<b>1,760</b>
TANIFF	87	88	22	1,936
TANIFF	99	46	24	1,104
<b>Subtotal</b>				<b>3,040</b>
<b>TOTAL ADMINISTRATION</b>				<b>13,048</b>
<b>GUIDANCE</b>				
Offices/Waiting	201-208	48	24	1,152
<b>Subtotal</b>				<b>1,152</b>
<b>TOTAL GUIDANCE</b>				<b>1,152</b>
<b>DINING/COMMONS</b>				
Cafeteria	110	92	70	6,440
<b>Subtotal</b>				<b>6,440</b>
Kitchen	108-109	92	16	1,472
<b>Subtotal</b>				<b>1,472</b>
Dining Storage	83-85	72	24	1,728
<b>Subtotal</b>				<b>1,728</b>
Auditorium Stage	163	20	92	1,840
<b>Subtotal</b>				<b>1,840</b>
Auditorium Floor	161-163	100	92	9,200
Auditorium Balcony (1st)	271	92	48	4,416
Auditorium Balcony (2nd)	300	92	48	4,416
<b>Subtotal</b>				<b>18,032</b>
<b>TOTAL DINING/COMMONS</b>				<b>29,512</b>



**APPENDIX C**  
**COMPARISON BETWEEN CARDOZO AND STANDARD ED SPECS**  
**OF NET FLOOR AREAS AND STUDENT CAPACITIES**

Appendix C: Comparison Between Cardozo and Standard Ed Specs of Net Floor Areas and Student Capacities

Room Category	Unit Sq. Ft.		Quantity		Total Sq. Ft.		Unit Capacity		Teaching Stations		Total Capacity	
	Proposed	Current	Proposed	Current	Proposed	Current	Proposed	Current	Proposed	Current	Proposed	Current
<b>Core Academic</b>												
Large Classrooms	0	1,056-1,152	0	3	0	3,360	0	21	0	3	0	63
Standard Classrooms	850	720	22	25	18,700	18,000	21	21	22	25	462	525
Small Classrooms	0	576	0	11	0	6,336	0	15	0	11	0	165
Science Class/Lab	1,300	912-1,392	6	6	7,800	7,200	21	21	6	6	126	126
Science Prep	400	0	2	0	800	0	0	0	0	0	0	0
Technology Lab	1,000	280-484	4	7	4,000	4,088	18	18	2	7	36	126
Resource Room	600	624	2	1	1,200	624	0	0	2	1	0	0
Special Education	3,100	576-960	1	9	3,100	6,144	10	10	1	9	10	90
Driver Education	0	576	0	1	0	576	0	10	0	1	0	10
Teachers Lounge	1,000	744	2	1	2,000	744	0	0	0	0	0	0
Small Group Rooms	100	0	6	0	600	0	0	0	0	0	0	0
Lockers	1,000	0	2	0	2,000	0	0	0	0	0	0	0
Student Services	650	0	2	0	1,300	0	0	0	0	0	0	0
School Store	200	864	1	1	200	864	0	0	0	0	0	0
Core Academic Storage	1,000	32-520	1	17	1,000	3,520	0	0	0	0	0	0
<b>Subtotal Core Academic</b>			<b>51</b>	<b>82</b>	<b>42,700</b>	<b>51,456</b>			<b>33</b>	<b>63</b>	<b>634</b>	<b>1,105</b>
<b>Career Tech. &amp; Educ.</b>												
Technical Teaching Lab	3,800	0	1	0	3,800	0	18	0	1	0	18	0
Electronics Lab	0	1,140	0	1	0	1,140	0	18	0	1	0	18
Auto Mechanics Shop	0	3,596	0	1	0	3,596	0	18	0	1	0	18
Graphic Arts	0	2,016	0	1	0	2,016	0	18	0	1	0	18
Wood Shop	0	900-2,128	0	2	0	3,028	0	18	0	1	0	18
Home Economics	0	480-1,248	0	3	0	2,688	0	18	0	1	0	18
Teacher Workroom	150	0	1	0	150	0	0	0	0	0	0	0
Office	150	0	1	0	150	0	0	0	0	0	0	0
Storage	275	96-396	1	3	275	636	0	0	0	0	0	0
<b>Subtotal Career Tech. &amp; Educ.</b>			<b>4</b>	<b>11</b>	<b>4,375</b>	<b>13,104</b>			<b>1</b>	<b>5</b>	<b>18</b>	<b>90</b>
<b>Media Center/Library</b>												
Stacks, Reading, Circ.	1,800	3,360	1	1	1,800	3,360	0	0	0	0	0	0
Office	150	600	1	1	150	600	0	0	0	0	0	0
Workroom	300	600	1	1	300	600	0	0	0	0	0	0

Appendix C: Comparison Between Cardozo and Standard Ed Specs of Net Floor Areas and Student Capacities

Room Category	Unit Sq. Ft.		Quantity		Total Sq. Ft.		Unit Capacity		Teaching Stations		Total Capacity	
	Proposed	Current	Proposed	Current	Proposed	Current	Proposed	Current	Proposed	Current	Proposed	Current
Computer Resource Area	800	0	1	0	800	0	0	0	0	0	0	0
Media Production Area	800	0	1	0	800	0	0	0	0	0	0	0
Periodical Storage	225	0	1	0	225	0	0	0	0	0	0	0
Equipment Storage	275	0	1	0	275	0	0	0	0	0	0	0
<b>Subtotal Media Center/Library</b>			<b>7</b>	<b>3</b>	<b>4,350</b>	<b>4,560</b>			<b>0</b>	<b>0</b>	<b>0</b>	<b>0</b>
<b>Visual Arts</b>												
Classroom	1,300	1,128	1	1	1,300	1,128	21	21	1	1	21	21
Kiln Room	150	0	1	0	150	0	0	0	0	0	0	0
Storage	150	112	1	1	150	112	0	0	0	0	0	0
<b>Subtotal Visual Arts</b>			<b>3</b>	<b>2</b>	<b>1,600</b>	<b>1,240</b>			<b>1</b>	<b>1</b>	<b>21</b>	<b>21</b>
<b>Performing Arts</b>												
Choral Room	1,100	1,800	1	1	1,100	1,800	21	35	1	1	21	35
Choral Practice Room	75-125	0	2	0	200	0	0	0	0	0	0	0
Music Library	250	0	1	0	250	0	0	0	0	0	0	0
Instrumental Room	1,400	1,104	1	1	1,400	1,104	21	21	1	1	21	21
Instrum. Practice Room	75-125	0	2	0	200	0	0	0	0	0	0	0
Office (shared w/Visual)	300	0	1	0	300	0	0	0	0	0	0	0
Scene Shop	400	0	1	0	400	0	0	0	0	0	0	0
Costume/Prop Room	175	0	1	0	175	0	0	0	0	0	0	0
Make-up/Dressing Room	325	0	2	0	650	0	0	0	0	0	0	0
Storage	300-350	72-288	3	3	950	432	0	0	0	0	0	0
<b>Subtotal Performing Arts</b>			<b>15</b>	<b>5</b>	<b>5,625</b>	<b>3,336</b>			<b>2</b>	<b>2</b>	<b>42</b>	<b>56</b>
<b>JROTC</b>												
Armory/Learning Center	1,200	3,528	1	1	1,200	3,528	21	21	1	1	21	21
Rifle Range	0	2,156	0	1	0	2,156	0	0	0	0	0	0
Office	200	864	1	1	200	864	0	0	0	0	0	0
Storage	600	120	1	1	600	120	0	0	0	0	0	0
<b>Subtotal JROTC</b>			<b>3</b>	<b>4</b>	<b>2,000</b>	<b>6,668</b>			<b>1</b>	<b>1</b>	<b>21</b>	<b>21</b>
<b>Physical Education</b>												
Gymnasium	11,000	4,512	1	2	11,000	9,024	42	21	1	2	42	42

Appendix C: Comparison Between Cardozo and Standard Ed Specs of Net Floor Areas and Student Capacities

Room Category	Unit Sq. Ft.		Quantity		Total Sq. Ft.		Unit Capacity		Teaching Stations		Total Capacity	
	Proposed	Current	Proposed	Current	Proposed	Current	Proposed	Current	Proposed	Current	Proposed	Current
Balconies	0	1,728	0	2	0	1,728						
Lockers/Showers (PE)	1,000	350-588	2	2	2,000	1,862	0	0	0	0	0	0
Athletic Locker Room	1,000	396	2	1	2,000	396	0	0	0	0	0	0
Pool	0	4,408	0	1	0	4,408	0	0	0	0	0	0
Fitness/Weight Room	900	528-1,320	1	2	900	1,848	21	0	1	0	21	0
Health Classroom	850	0	1	0	850	0	21	0	1	0	21	0
Office	150	680	1	1	150	680	0	0	0	0	0	0
Teacher Workroom	600	0	1	0	600	0	0	0	0	0	0	0
Concession	400	0	1	0	400	0	0	0	0	0	0	0
Training/Physical Therapy	350	480	1	1	350	480	0	0	0	0	0	0
Laundry	150	396	1	1	150	396	0	0	0	0	0	0
Storage	varies	192-220	4	2	1,400	412	0	0	0	0	0	0
<b>Subtotal Physical Education</b>			<b>16</b>	<b>15</b>	<b>19,800</b>	<b>21,234</b>			<b>3</b>	<b>2</b>	<b>84</b>	<b>42</b>
<b>Administration</b>												
Principal's Office	530	532	1	1	530	532	0	0	0	0	0	0
Asst. Principal's Office	200	532	1	1	200	532	0	0	0	0	0	0
Administration Offices	1,475	various	1	3	1,475	3,848	0	0	0	0	0	0
Registration	0	576	0	1	0	576	0	0	0	0	0	0
Records	200	576	1	1	200	576	0	0	0	0	0	0
Nurse/Health Suite	710	1,152	1	1	710	1,152	0	0	0	0	0	0
School Bank	0	576	0	1	0	576	0	0	0	0	0	0
Book Room	450	456	1	1	450	456	0	0	0	0	0	0
In School Suspension	0	1,760	0	1	0	1,760	0	0	0	0	0	0
TANIFF	0	1,104-1,936	0	2	0	3,040						
Lobby	500	0	1	0	500	0	0	0	0	0	0	0
Mail Room	150	0	1	0	150	0	0	0	0	0	0	0
Staff Break Room	250	0	1	0	250	0	0	0	0	0	0	0
Parent Resource Center	275	0	1	0	275	0	0	0	0	0	0	0
Telecom/Head End Room	250	0	1	0	250	0	0	0	0	0	0	0
Storage	450	0	1	0	450	0	0	0	0	0	0	0
<b>Subtotal Administration</b>			<b>12</b>	<b>13</b>	<b>5,440</b>	<b>13,048</b>			<b>0</b>	<b>0</b>	<b>0</b>	<b>0</b>
<b>Guidance</b>												
Offices/Waiting	1,550	1,152	1	1	1,550	1,152	0	0	0	0	0	0

Appendix C: Comparison Between Cardozo and Standard Ed Specs of Net Floor Areas and Student Capacities

Room Category	Unit Sq. Ft.		Quantity		Total Sq. Ft.		Unit Capacity		Teaching Stations		Total Capacity	
	Proposed	Current	Proposed	Current	Proposed	Current	Proposed	Current	Proposed	Current	Proposed	Current
<b>Subtotal Guidance</b>			1	1	1,550	1,152			0	0	0	0
<b>Dining/Commons</b>												
Cafeteria	3,300	6,440	1	1	3,300	6,440	0	0	0	0	0	0
Kitchen	2,350	1,472	1	1	2,350	1,472	0	0	0	0	0	0
Dining Storage	1,150	1,728	1	1	1,150	1,728	0	0	0	0	0	0
Toilet/Shower/Lockers	100	0	2	0	200	0	0	0	0	0	0	0
Stage	1,600	1,840	1	1	1,600	1,840	0	0	0	0	0	0
Ticket Booth/Box Office	75	0	1	0	75	0	0	0	0	0	0	0
Sound/Light Control Room	125	0	1	0	125	0	0	0	0	0	0	0
Chair/Piano Storage	350	0	1	0	350	0	0	0	0	0	0	0
Auditorium	0	18,032	0	1	0	18,032	0	0	0	0	0	0
<b>Subtotal Dining/Commons</b>			9	5	9,150	29,512			0	0	0	0